

WAAS CH 99602 W22A	APP CRS 218°	Rwy Idg 11001 TDZE 964 Apt Elev 964
--	------------------------	--

RNAV (GPS) RWY 22
GREENVILLE SPARTANBURG INTL (GSP)

RNP APCH.

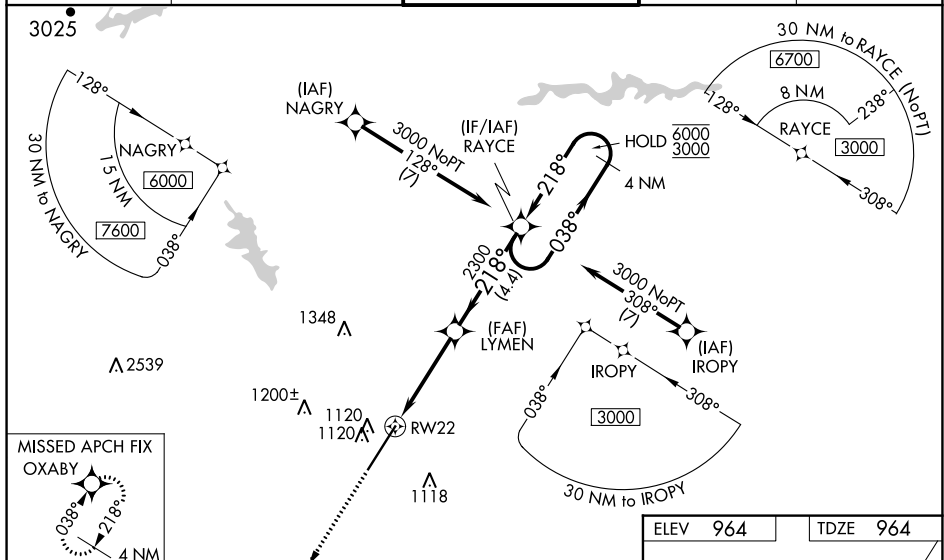
For uncompensated Baro-VNAV systems, LNAV/VNAV NA below -10°C or above 54°C. For inop ALS, increase LNAV/VNAV all Cats visibility to RVR 4500. When local altimeter setting not received, use Greenville downtown altimeter setting: increase LPV DA to 1193 feet; increase LNAV/VNAV DA to 1267 feet; increase all MDA 40 feet and LNAV Cat C/D visibility to RVR 4000; increase Circling Cat D visibility to 2½ SM. For inop ALS, when using Greenville downtown altimeter setting, increase LNAV/VNAV all Cats visibility to RVR 4500. VDP and Baro-VNAV NA when using Greenville downtown altimeter setting.

MALSR



MISSED APPROACH:
Climb to 3000 direct
OXABY and hold.

ATIS 134.25	GREER APP CON ★ 118.8 270.275	GREER TOWER ★ 120.1 (CTAF) 0 251.15	GND CON 121.9	UNICOM 122.95
----------------	----------------------------------	--	------------------	------------------



3000 OXABY

VGSI and RNAV glidepath not coincident (VGSI Angle 3.00/TCH 76).

RAYCE 4 NM Holding Pattern

*LNAV only.

LYMEN 2300

*1 NM to RW22

RW22

038° → 6000
← 218° 3000

2300

GP 3.00° TCH 61

1 NM 3 NM 4.4 NM

CATEGORY		A	B	C	D
LPV	DA	1164/24		200 (200-½)	
LNAV/ VNAV	DA	1238/24		274 (300-½)	
LNAV	MDA	1360/24	396 (400-½)	1360/35	396 (400-¾)
C CIRCLING		1440-1	476 (500-1)	1480-1½ 516 (600-1½)	1700-2¼ 736 (800-2¼)

