

WAAS CH <b>61215</b> <b>W05A</b>	APP CRS <b>050°</b>	Rwy Idg TDZE <b>181</b> Apt Elev <b>182</b>
--	------------------------	---

RNAV (GPS) RWY 5

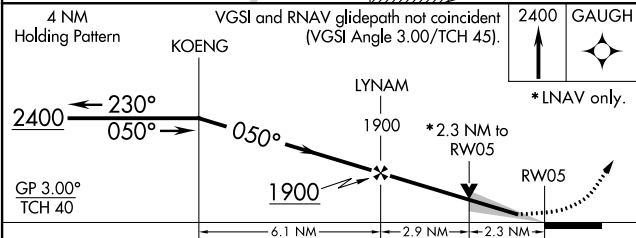
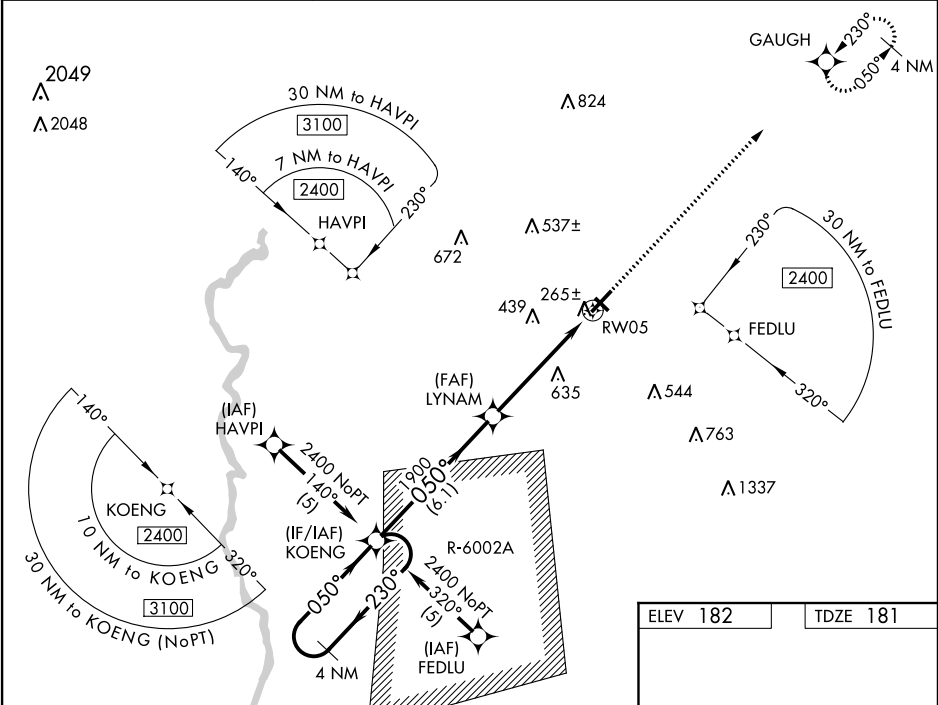
SUMTER (SMS)

⚠

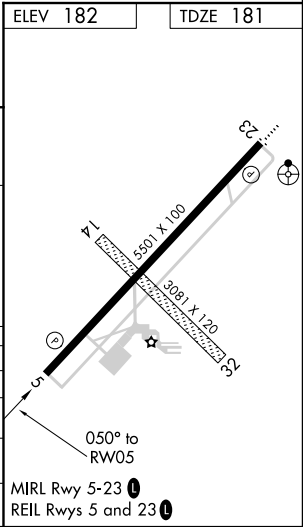
For uncompensated Baro-VNAV systems, LNAV/VNAV NA below -1.5°C (5°F) or above 48°C (118°F). DME/DME RNP-0.3 NA. Procedure NA when R-6002A is active. Circling NA to Rwy 14-32. When local altimeter setting not received, use Camden altimeter setting and increase all DA 65 feet and all MDA 80 feet and LPV all Cats, LNAV/VNAV all Cats, LNAV Cats C/D, and Circling Cats C/D visibilities ¼ mile. VDP and Baro/VNAV NA when using Camden altimeter setting.

MISSED APPROACH: Climb to 2400 direct GAUGH and hold.

AWOS-3 <b>118.075</b>	SHAW APP CON * <b>125.4</b>	UNICOM <b>122.7 (CTAF)</b>
--------------------------	--------------------------------	-------------------------------



CATEGORY	A	B	C	D
LPV DA	381-3/4 200 (200-3/4)			
LNAV/VNAV DA	535-1 354 (400-1 1/4)			
LNAV MDA	940-1 759 (800-1)	940-1 1/4 759 (800-1 1/4)	940-2 1/4 759 (800-2 1/4)	940-2 1/2 759 (800-2 1/2)
CIRCLING	940-1 758 (800-1)	940-1 1/4 758 (800-1 1/4)	1000-2 1/2 818 (900-2 1/2)	1000-2 3/4 818 (900-2 3/4)



SE-2, 03 DEC 2020 to 31 DEC 2020

SE-2, 03 DEC 2020 to 31 DEC 2020