

NDB AIK

347

APP CRS

225°

Rwy Idg

5500

TDZE

515

Apt Elev

529

NDB RWY 25

AIKEN RGNL (AIK)

▼

NA

When local altimeter setting not received, use Augusta Rgnl at Bush Field altimeter setting and increase all MDA 120 feet and S-25 Cat B/C/D and Circling Cat B visibility ¼ mile, Circling Cat C ½ mile and Circling Cat D ½ mile. For inop ODALS, increase S-25 Cat C/D visibility to 1 ½ mile. For inop ODALS when using Augusta Rgnl at Bush Field altimeter setting, increase S-25 Cat C/D visibility to 2 ½ mile. Helicopter visibility reduction below ¾ SM NA.

ODALS

MISSED APPROACH: Climbing right turn to 2200 in AIK NDB holding pattern.

AWOS-3

118.025

AUGUSTA APP CON ★

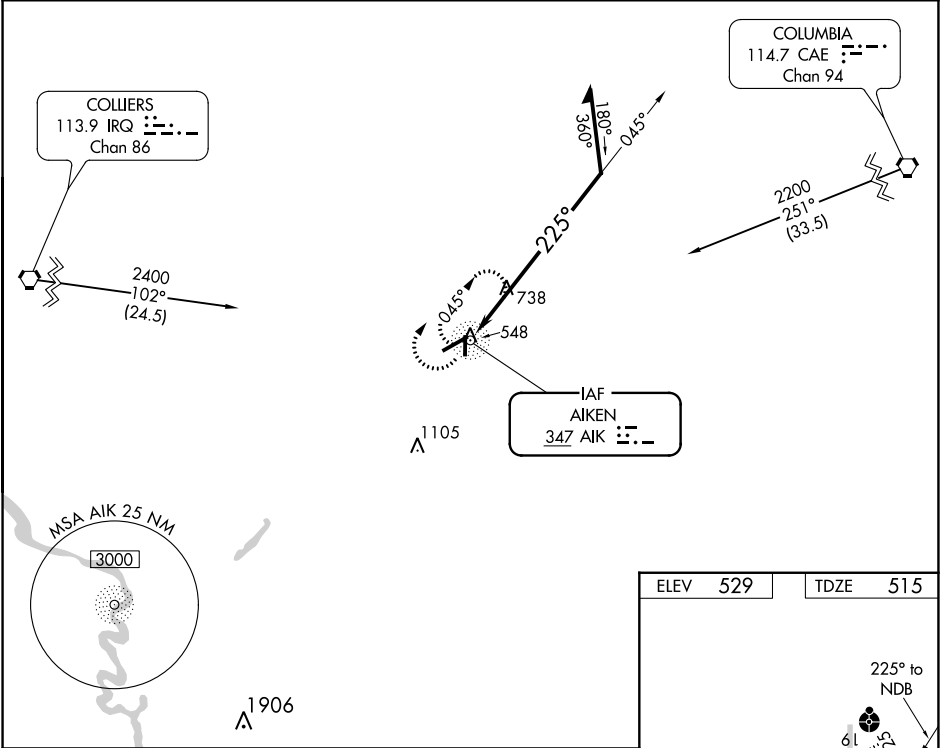
119.15 284.625

CLNC DEL

126,075

UNICOM

122.8 (CTAF) 0



2200 AIK

AIK NDB

Remain within 10 NM

045° 2200

225°

CATEGORY	A	B	C	D
S-25	1180-3/4 665 (700-3/4)	1180-1 651 (700-1)	1180-1 3/4 665 (700-1 3/4)	1180-2 651 (700-2)
CIRCLING	1180-1 651 (700-1)	1180-1 3/4 665 (700-1 3/4)	1180-2 651 (700-2)	1180-2 651 (700-2)

ELEV 529 TDZE 515

REIL Rwy 25 MIRL Rwy 7-25 0