

WAAS CH 42726 W23A	APP CRS 234°	Rwy Idg 5722 TDZE 443 Apt Elev 459
--	------------------------	---

RNAV (GPS) RWY 23

MOORE COUNTY (SOP)

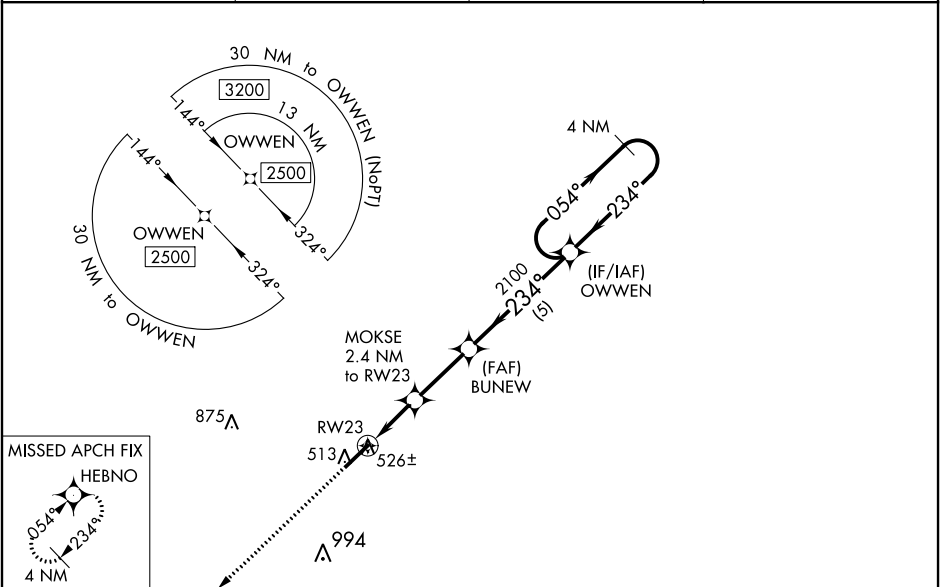
RNP APCH.

▼

Baro-VNAV NA when using Sanford altimeter setting. For uncompensated Baro-VNAV systems, LNAV/VNAV NA below -15°C or above 54°C. When local altimeter setting not received, use Sanford altimeter setting and increase all DA 88 feet and all MDA 100 feet; increase LNAV Cats C/D visibility $\frac{3}{8}$ mile and Circling Cat C visibility $\frac{1}{2}$ mile. Rwy 23 helicopter visibility reduction below $\frac{3}{4}$ SM NA.

MISSED APPROACH:
Climb to 2500 direct HEBNO and hold.

AWOS-3PT 127.575	FAYETTEVILLE APP CON 127.8 343.725	CLNC DEL 127.0	UNICOM 123.05 (CTAF) 1
----------------------------	---	--------------------------	---



ELEV **459** **D** TDZE **443**

2500 HEBNO
234° to RW23
514 MSL
234°
0.4% UP 0
6503 x 130

REIL Rwy 23 **1**
HIRL Rwy 5-23 **1**

2500 HEBNO VGSI and RNAV glidepath not coincident (VGSI Angle 3.00/TCH 41). 4 NM Holding Pattern				
*LNAV only MOKSE 2.4 NM to RW23 BUNEW 2100 RW23 234° 054° 2500 GP 3.00° TCH 54				
2.4 NM 2.7 NM 5 NM				
CATEGORY	A	B	C	D
LPV DA	693-1 250 (300-1)			
LNAV/VNAV DA	699-1 256 (300-1)			
LNAV MDA	780-1 337 (400-1)			
C CIRCLING	880-1 421 (500-1)	920-1 461 (500-1)	1100-1 $\frac{3}{4}$ 641 (700-1 $\frac{3}{4}$)	1360-3 901 (1000-3)