

WAAS CH <b>70526</b> <b>W05A</b>	APP CRS <b>054°</b>	Rwy Idg <b>5502</b> TDZE <b>455</b> Apt Elev <b>459</b>
--	------------------------	---

RNAV (GPS) RWY 5

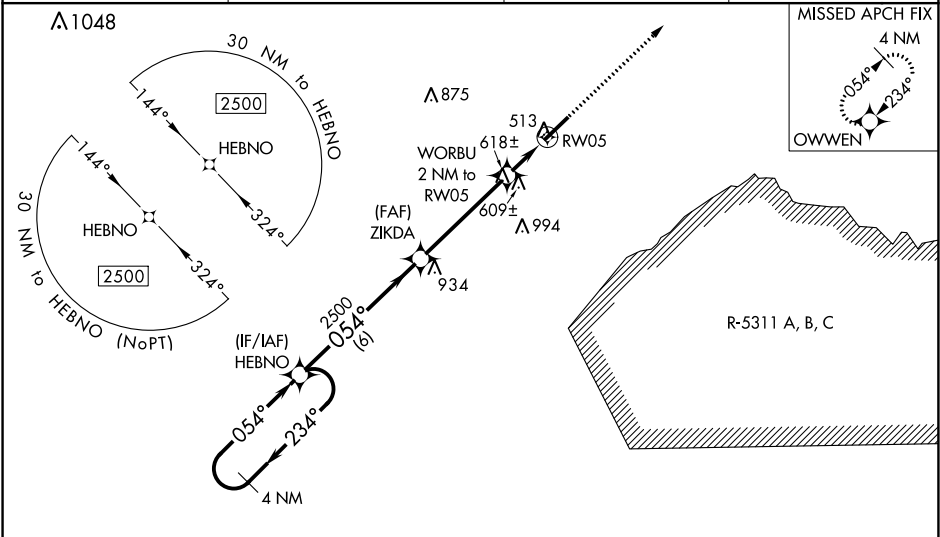
MOORE COUNTY (SOP)

**⚠** For uncompensated Baro-VNAV systems, LNAV/VNAV NA below -15°C (5°F) or above 54°C (130°F). DME/DME RNP-0.3 NA. For inop MALSR, increase LNAV/VNAV all Cats visibility to ¾ mile, LNAV Cats A/B visibility to 1 mile and LNAV Cats C/D visibility to 1½ mile. When local altimeter setting not received, use Sanford altimeter setting and increase all DA 88 feet and all MDA 100 feet, increase LNAV/VNAV all Cats visibility ½ mile, LNAV Cats C/D visibility ¼ mile, and Circling Cat C ½ mile. When using Sanford altimeter setting, for inop MALSR increase LNAV/VNAV all Cats visibility to 1½ mile, LNAV Cats A/B visibility to 1 mile, and LNAV Cat C/D visibility to 1¾ mile. Baro-VNAV and VDP NA when using Sanford altimeter setting.

MALSR

MISSED APPROACH:  
Climb to 2500 direct  
OWWEN and hold.

AWOS-3PT <b>127.575</b>	FAYETTEVILLE APP CON <b>127.8 343.725</b>	CLNC DEL <b>127.0</b>	UNICOM <b>123.05 (CTAF) 0</b>
----------------------------	--	--------------------------	----------------------------------



4 NM Holding Pattern					<div>2500</div> <div>OWWEN</div> <div>↑</div> <div>✦</div> <div>* LNAV only</div>	
<div>HEBNO</div> <div>ZIKDA</div> <div>2500</div> <div>2500</div> <div>2500</div> <div>234°</div> <div>054°</div> <div>054°</div> <div>054°</div> <div>WORBU</div> <div>2 NM to RW05</div> <div>*1.1 NM to RW05</div> <div>RW05</div> <div>*1120</div> <div>GP 3.00°</div> <div>TCH 39°</div> <div>6 NM</div> <div>4.3 NM</div> <div>0.9 NM</div> <div>1.1 NM</div>					<div>ELEV 459</div> <div>D</div> <div>TDZE 455</div>	
CATEGORY	A		B		C	D
LPV DA	655-½ 200 (200-½)					
LNAV/VNAV DA	750-½ 295 (300-½)					
LNAV MDA	860-½ 405 (500-½)		860-¾ 405 (500-¾)			
CIRCLING	880-1 421 (500-1)	920-1 461 (500-1)	1100-1¾ 641 (700-1¾)	1360-3 901 (1000-3)		

514

6503 X 150

0.4 % Up

054° to RW05

REIL Rwy 23

HIRL Rwy 5-23