

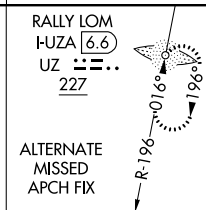
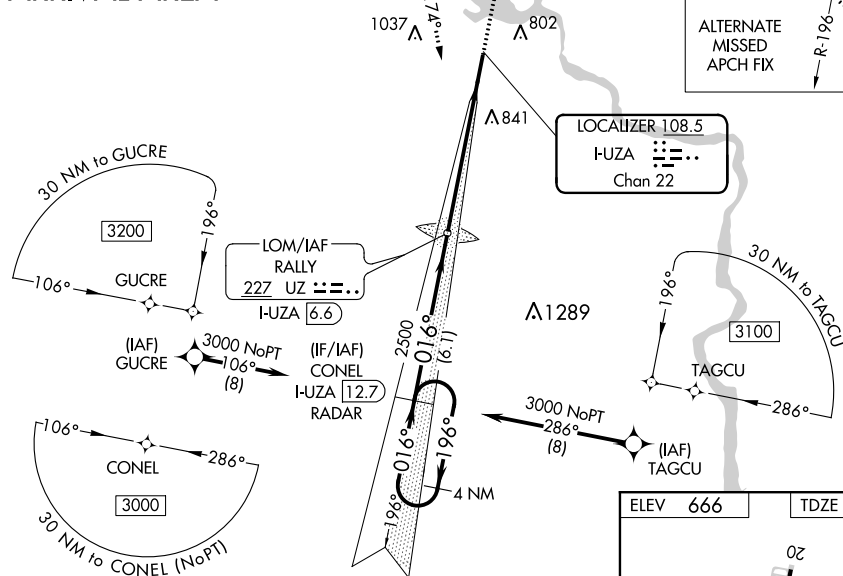
ILS Y or LOC Y RWY 2  
ROCK HILL/YORK COUNTY/BRYANT FIELD (UZA)


MALSR

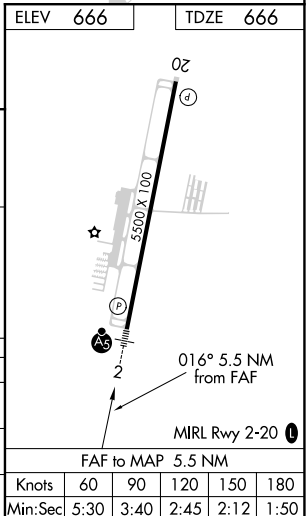
**MISSED APPROACH:** Climb to 1500 then climbing left turn to 3000 on heading 174° and CLT VOR/DME R-203 to CONEL/I-UZA 12.7 DME/RADAR and hold.

ASOS <b>120.775</b>	CHARLOTTE APP CON <b>120.05 307.8</b>	CLINC DEL <b>126.85</b>	UNICOM <b>123.05 (CTAF) 0</b>
------------------------	--	----------------------------	----------------------------------

GPS REQUIRED  
FOR TERMINAL  
ARRIVAL AREA

[illegible]

CATEGORY	A	B	C	D
S-ILS 2	866- <sup>1</sup> / <sub>2</sub> 200 (200- <sup>1</sup> / <sub>2</sub> )			
S-LOC 2	1080- <sup>1</sup> / <sub>2</sub> 414 (500- <sup>1</sup> / <sub>2</sub> )		1080- <sup>3</sup> / <sub>4</sub> 414 (500- <sup>3</sup> / <sub>4</sub> )	
 CIRCLING	1140-1 474 (500-1)	1160-1 494 (500-1)	1340-2 674 (700-2)	1340-2 <sup>1</sup> / <sub>4</sub> 674 (700-2 <sup>1</sup> / <sub>4</sub> )



SE-2, 03 DEC 2020 to 31 DEC 2020