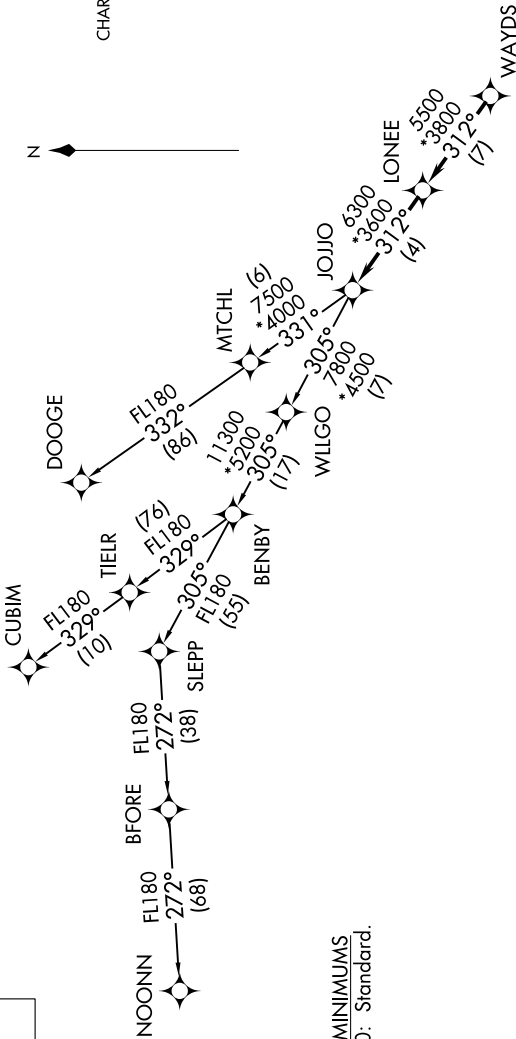


TOP ALTITUDE:  
3000

(JOJJO4.JOJJO) 19003

JOJJO FOUR DEPARTURE (RNAV) ROCK HILL/YORK COUNTY/BRYANT FIELD (UZA)  
AL-5361 (FAA) ROCK HILL, SOUTH CAROLINA

ASOS  
120.775  
CLNC DEL  
126.85  
UNICOM (CTAF)  
123.05  
CHARLOTTE DEP CON  
120.05 307.8



TAKEOFF MINIMUMS  
Rwys 2, 20: Standard.

### DEPARTURE ROUTE DESCRIPTION

Climb on heading assigned by ATC, expect RADAR vectors to WAYDS, then on depicted route to JOJO. Then on assigned transition. Maintain 3000, expect clearance to filed altitude within 10 minutes after departure.

CUBIM TRANSITION (JOJJO4.CUBIM)  
DOOGE TRANSITION (JOJJO4.DOOGE)  
NOONN TRANSITION (JOJJO4.NOONN)

- NOTE: For turbojets only.
- NOTE: DME/DME/IRU or GPS required.
- NOTE: RNAV 1.
- NOTE: RADAR required.
- NOTE: If unable to accept climb rates, advise ATC on initial contact.
- NOTE: Upon reaching 10000 MSL, accelerate to and maintain 280K, if unable advise ATC.
- NOTE: NOONN TRANSITION ATC assigned only.

NOTE: Chart not to scale.

JOJJO FOUR DEPARTURE (RNAV)  
(JOJJO4.JOJJO) 03JAN19

ROCK HILL, SOUTH CAROLINA  
ROCK HILL/YORK COUNTY/BRYANT FIELD (UZA)