

ROCK HILL, SOUTH CAROLINA

AL-5361 (FAA)

19283

WAAS CH <b>90325</b> <b>W20A</b>	APP CRS <b>196°</b>	Rwy Idg TDZE Apt Elev	<b>5500</b> <b>662</b> <b>666</b>
--	------------------------	-----------------------------	---

## RNAV (GPS) RWY 20

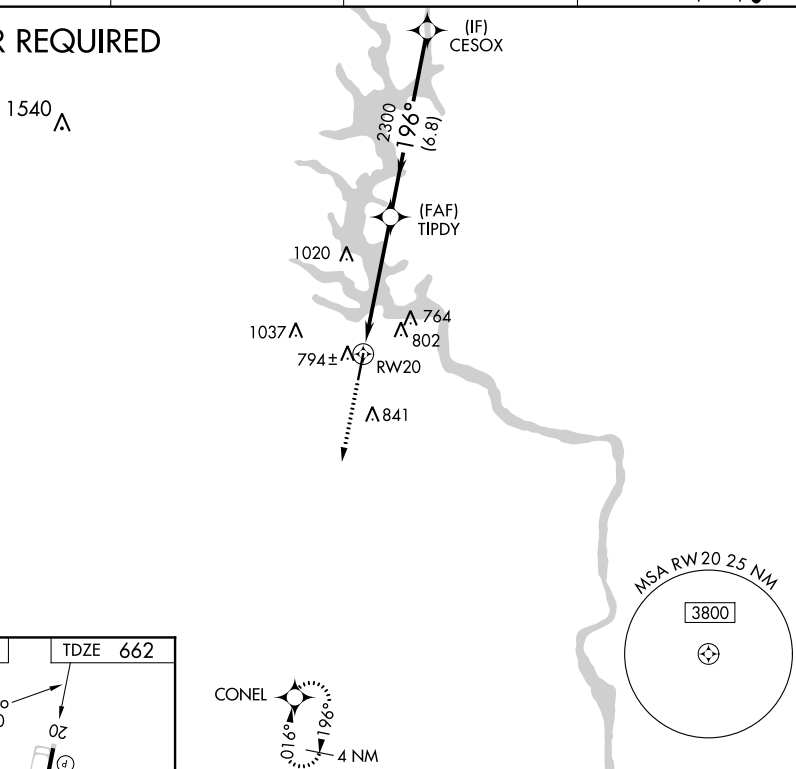
ROCK HILL/YORK COUNTY/BRYANT FIELD (UZA)

**▼** For uncompensated Baro-VNAV systems, LNAV/VNAV NA below -16°C (4°F) or above 39°C (102°F).  
**▲** DME/DME RNP-0.3 NA. When local altimeter setting not received, use Charlotte/Douglas Int'l altimeter setting and increase all DA 45 feet and all MDA 60 feet; increase LPV all Cats visibility  $\frac{1}{8}$  mile, LNAV/VNAV all Cats  $\frac{1}{4}$  mile, LNAV Cats C and D  $\frac{1}{4}$  mile. VDP and Baro-VNAV NA when using Charlotte/Douglas Int'l altimeter setting. Rwy 20 helicopter visibility reduction below  $\frac{3}{4}$  SM NA.

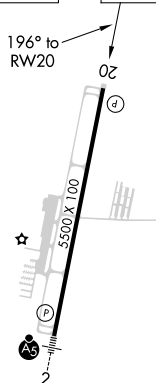
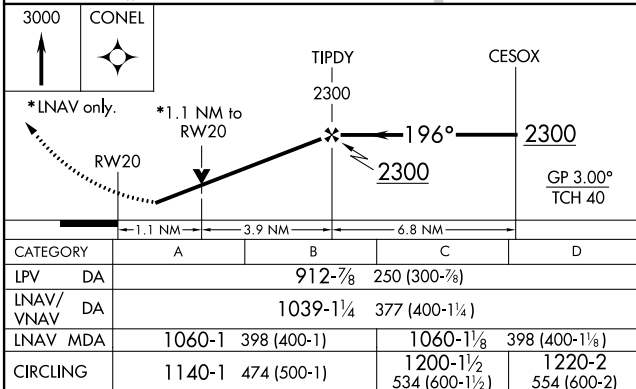
**MISSED APPROACH:**  
Climb to 3000 direct  
CONEL and hold.

ASOS <b>120.775</b>	CHARLOTTE APP CON <b>120.05 307.8</b>	CLNC DEL <b>126.85</b>	UNICOM <b>123.05 (CTAF) 1</b>
------------------------	--	---------------------------	----------------------------------

## RADAR REQUIRED



ELEV 666		TDZE 662
----------	--	----------

MIRL Rwy 2-20 **L**

ROCK HILL, SOUTH CAROLINA

Amdt 1A 22JUN17

ROCK HILL/YORK COUNTY/BRYANT FIELD (UZA)

34°59'N-81°03'W

RNAV (GPS) RWY 20

SE-2, 03 DEC 2020 to 31 DEC 2020

SE-2, 03 DEC 2020 to 31 DEC 2020