

NDB MNI	APP CRS	Rwy Idg	3602
381	026°	TDZE	102
		Apt Elev	104

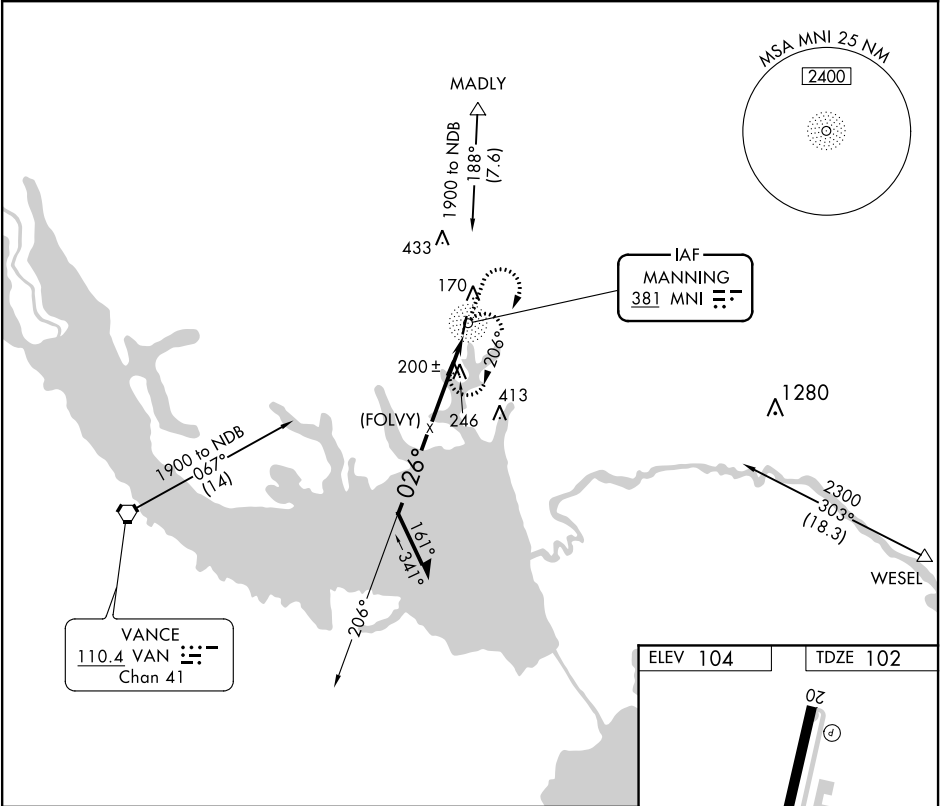
NDB or GPS RWY 2

SANTEE COOPER RGNL (MNI)

When local altimeter setting not received,
use Florence altimeter setting.

MISSED APPROACH: Climb to 1200 then climbing
right turn to 1900 direct MNI NDB and hold.

AWOS-3 120.175	SHAW APP CON★ 125.4 318.1	UNICOM 122.8 (CTAF) 0
-------------------	------------------------------	--------------------------



Remain within 10 NM

1900

206°

(FOLVY)

026°

MNI NDB

4 NM

1200

1900

MNI

CATEGORY	A	B	C	D
S-2	660-1 558 (600-1)	660-1½ 558 (600-1½)	660-1¾ 558 (600-1¾)	660-2 558 (600-2)
CIRCLING	660-1 556 (600-1)	660-1½ 556 (600-1½)	660-2 556 (600-2)	660-2 556 (600-2)

