

LOC I-MEB  
**110.7**

APP CRS  
**054°**

Rwy Idg  
TDZE  
Apt Elev  
**6502**  
**216**  
**216**

ILS or LOC RWY 5

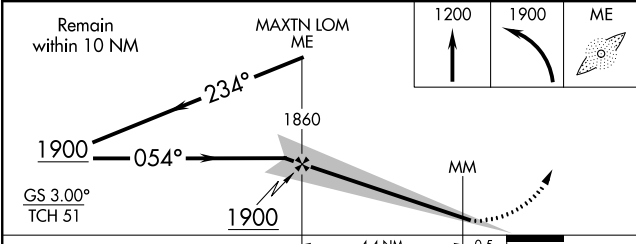
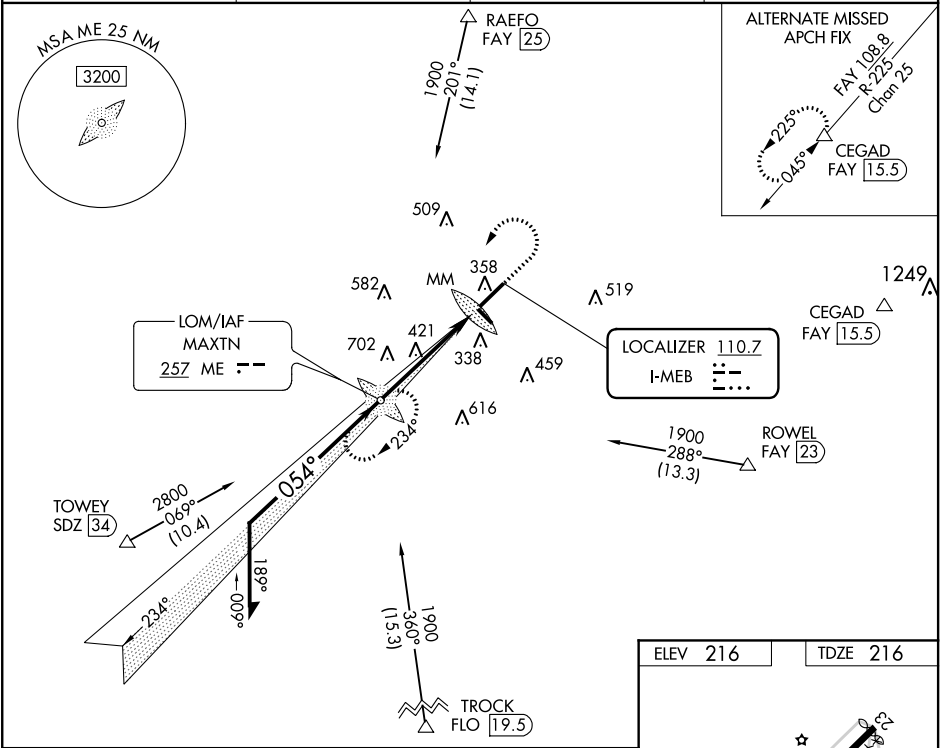
LAURINBURG-MAXTON (MEB)

ADF required for procedure entry.  
ADF required.

MALSR

MISSED APPROACH: Climb to 1200 then climbing left turn to 1900 direct MAXTN LOM and hold.

ASOS <b>134.125</b>	FAYETTEVILLE APP CON <b>127.8 343.725</b>	GCO <b>135.075</b>	UNICOM <b>122.8 (CTAF) 0</b>
------------------------	--	-----------------------	---------------------------------



CATEGORY	A	B	C	D
S-ILS 5	416-1/2		200 (200-1/2)	
S-LOC 5	680-1/2	464 (500-1/2)	680-1	464 (500-1)
CIRCLING	740-1	524 (600-1)	780-1 1/2 564 (600-1 1/2)	1020-2 1/2 804 (900-2 1/2)

