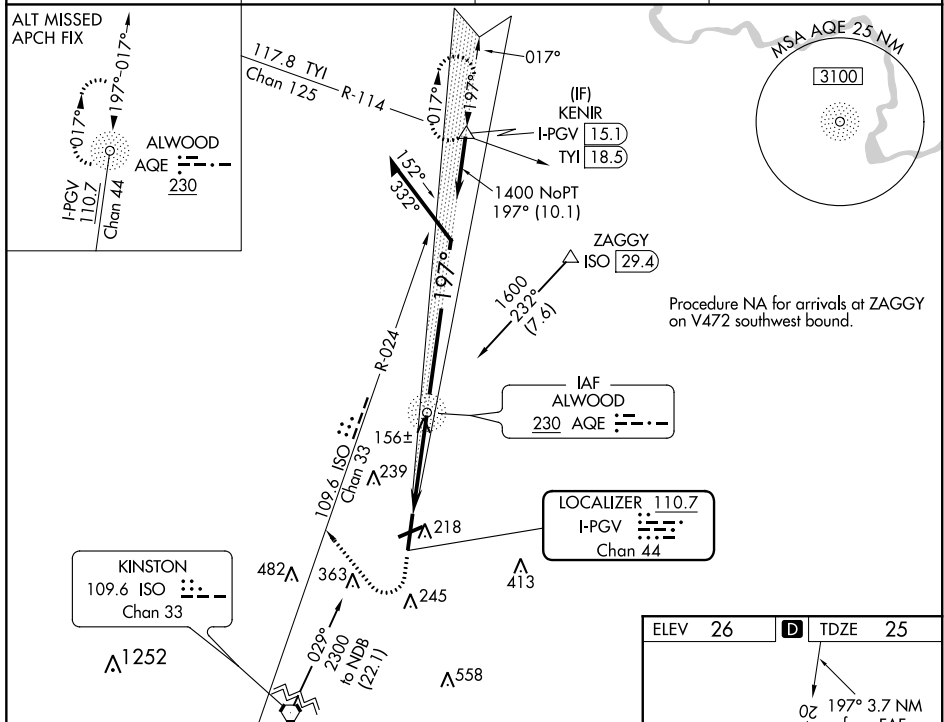


ILS Z or LOC Z RWY 20
PITT-GREENVILLE (PGV)

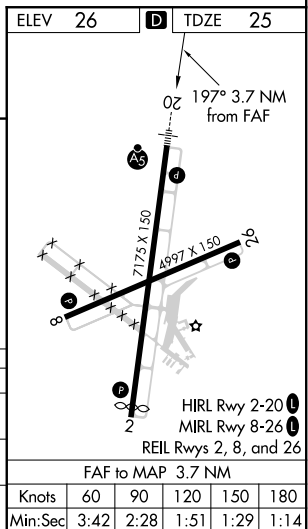
MALSR
A5

MISSED APPROACH: Climb to 800 then climbing right turn to 2100 on heading 330° and on ISO VORTAC R-024 to KENIR INT/15.1 DME and hold.

AWOS-3 128.425	WASHINGTON CENTER 123.85 279.65	CLNC DEL 122.35	UNICOM 122.8 (CTAF) 0
--------------------------	---	---------------------------	---------------------------------



800 ↑	2100 hdg 330°	ISO R-024	KENIR △																																																																																																																																																																																																																																																																																																																																																																																																																																																																																																																																																																																																																																																																																																																																																																																																																																																																																																																																																																																																																																																																																																																																																																																																																																																																																																																																																																																																																																																																																																																																																																																																																																																																																																																																																																																																																																																																																																																																																																																																																																																																																																																																																																																																																																																																																																																																																																																																								
* LOC only				* I-PGV																																																																																																																																																																																																																																																																																																																																																																																																																																																																																																																																																																																																																																																																																																																																																																																																																																																																																																																																																																																																																																																																																																																																																																																																																																																																																																																																																																																																																																																																																																																																																																																																																																																																																																																																																																																																																																																																																																																																																																																																																																																																																																																																																																																																																																																																																																																																																																																																							
				1.3				2.2																																																																																																																																																																																																																																																																																																																																																																																																																																																																																																																																																																																																																																																																																																																																																																																																																																																																																																																																																																																																																																																																																																																																																																																																																																																																																																																																																																																																																																																																																																																																																																																																																																																																																																																																																																																																																																																																																																																																																																																																																																																																																																																																																																																																																																																																																																																																																																																																			



SE-2, 03 DEC 2020 to 31 DEC 2020