

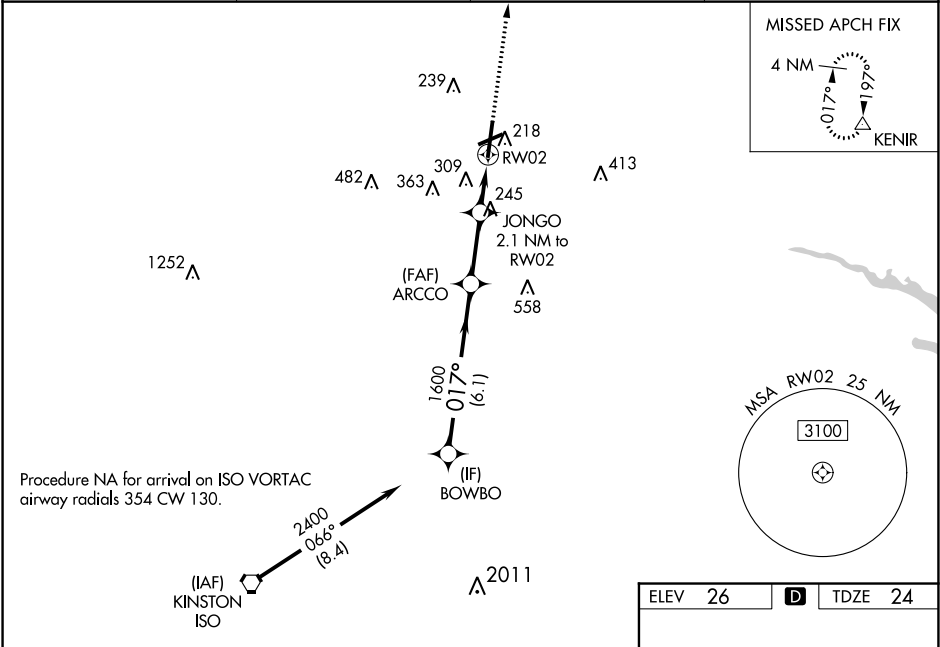
WAAS CH 42738 W02A	APP CRS 017°	Rwy Idg 6904 TDZE 24 Apt Elev 26
--	------------------------	---

RNAV (GPS) RWY 2
PITT-GREENVILLE (PGV)

⚠ Night landing: Rwy 8 NA. Baro-VNAV NA when using Washington altimeter setting. For uncompensated Baro-VNAV systems, LNAV/VNAV NA below -15°C (5°F) or above 50°C (122°F). DME/DME RNP-0.3 NA. Helicopter visibility reduction below ¾ SM NA. When local altimeter setting not received, use Washington altimeter setting: increase LPV DA to 444 feet and LNAV/VNAV DA to 661 feet and all MDA 60 feet; increase LPV all Cats visibility ½ mile and LNAV/VNAV all Cats visibility ½ mile and LNAV Cat C/D and Circling Cat C/D visibility ¼ mile. VDP NA when using Washington altimeter setting.

MISSED APPROACH:
Climb to 2100 direct KENIR and hold.

AWOS-3 128.425	WASHINGTON CENTER 123.85 279.65	CLNC DEL 122.35	UNICOM 122.8 (CTAF) 0
--------------------------	---	---------------------------	---------------------------------



VGSi and RNAV glidepath not coincident (VGSi Angle 3.10/TCH 41).				
CATEGORY	A	B	C	D
LPV DA	403-1¼		379 (400-1¼)	
LNAV/VNAV DA	620-2		596 (600-2)	
LNAV MDA	540-1	516 (600-1)	540-1¾	516 (600-1¾)
CIRCLING	600-1 574 (600-1)	620-1 594 (600-1)	680-1¾ 654 (700-1¾)	800-2½ 774 (800-2½)

