

|         |          |      |
|---------|----------|------|
| APP CRS | Rwy Idg  | 4997 |
| 076°    | TDZE     | 24   |
|         | Apt Elev | 26   |

RNAV (GPS) RWY 8  
PITT-GREENVILLE (PGV)

**T**  
**A** DME/DME RNP-0.3 NA. Visibility reduction by helicopters NA. When local altimeter setting not received use Washington altimeter setting and increase all MDA 60 feet and increase LNAV Cats C and D and Circling Cat C visibilities ¼ mile.

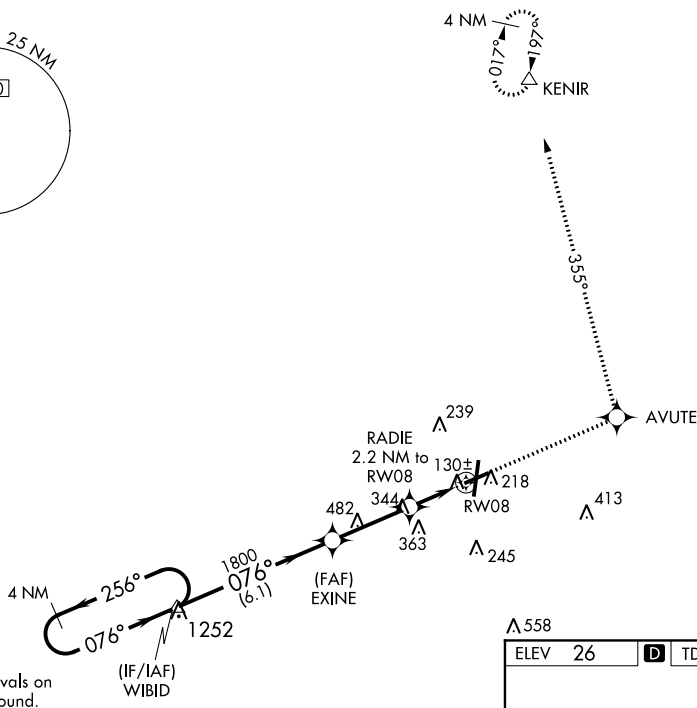
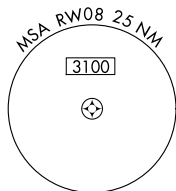
**MISSED APPROACH:** Climb to 3000 direct AVUTE and via 355° track to KENIR and hold.

AWOS-3  
128,425

WASHINGTON CENTER  
123.85 279.65

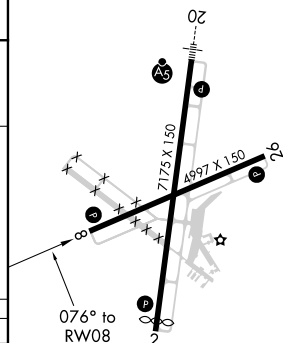
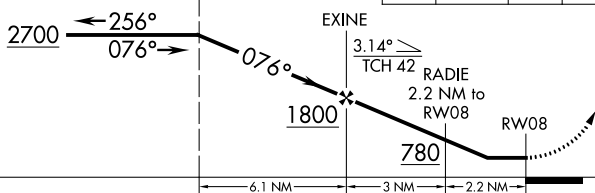
CLNC DEL  
**122,35**

UNICOM  
122.8 (CTAF) **L**



VGSI and descent angles not coincident  
(VGSI Angle 4.00/TCH 53).

|      |       |            |            |
|------|-------|------------|------------|
| 3000 | AVUTE | tr<br>355° | KENIR<br>△ |
|------|-------|------------|------------|



HIRL Rwy 2-20 **L**  
MIRL Rwy 8-26 **L**  
REIL Rwys 2, 8, and 26

GREENVILLE, NORTH CAROLINA  
Amdt 2A 17DEC09

35°38'N-77°23'W

PITT-GREENVILLE (PGV)  
RNAV (GPS) RWY 8

SE-2, 03 DEC 2020 to 31 DEC 2020