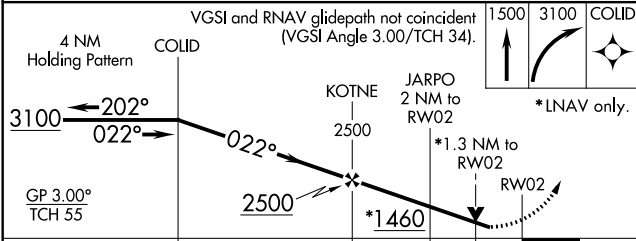
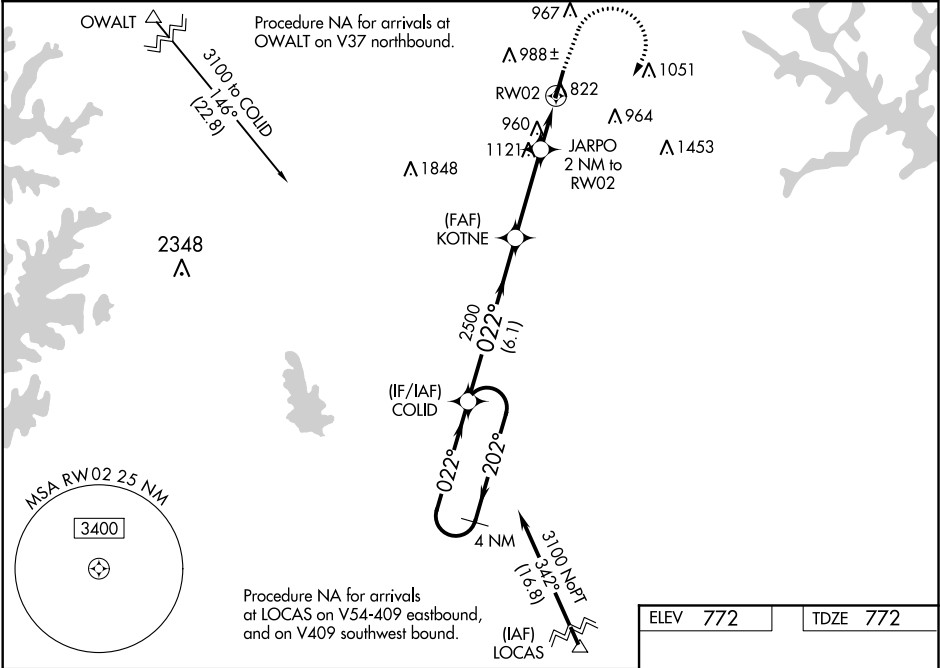


WAAS CH <b>40321</b> <b>W02A</b>	APP CRS <b>022°</b>	Rwy Idg TDZE <b>772</b> Apt Elev <b>772</b>	<b>5375</b>
--	------------------------	---	-------------

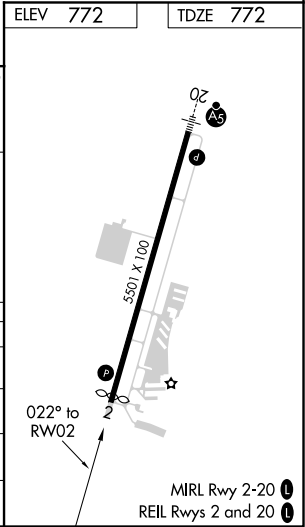
RNAV (GPS) RWY 2  
MID-CAROLINA RGNL (RUQ)

RNP APCH.  ▼ For uncompensated Baro-VNAV systems, LNAV/VNAV NA below -16°C or above 54°C. Rwy 2 helicopter visibility reduction below ¾ SM NA. DME/DME RNP-0.3 NA.	MISSED APPROACH: Climb to 1500 then climbing right turn to 3100 direct COLID and hold.
--	--

AWOS-3 <b>118.175</b>	CHARLOTTE APP CON <b>128.325 307.8</b>	CLNC DEL <b>127.35</b>	UNICOM <b>122.725 (CTAF) 0</b>
--------------------------	---	---------------------------	-----------------------------------



CATEGORY	A	B	C	D
LPV DA	1138-1	366 (400-1)		
LNAV/VNAV DA	1181-1½	409 (500-1½)		
LNAV MDA	1220-1	448 (500-1)	1220-1¾	448 (500-1¾)
CIRCLING	1220-1 448 (500-1)	1260-1 488 (500-1)	1440-1¾ 668 (700-1¾)	1440-2 668 (700-2)



SE-2, 03 DEC 2020 to 31 DEC 2020

SE-2, 03 DEC 2020 to 31 DEC 2020