

WAAS CH 42521 W20A	APP CRS 202°	Rwy Idg 5501 TDZE 772 Apt Elev 772
--	------------------------	---

RNAV (GPS) RWY 20
MID-CAROLINA RGNL (RUQ)

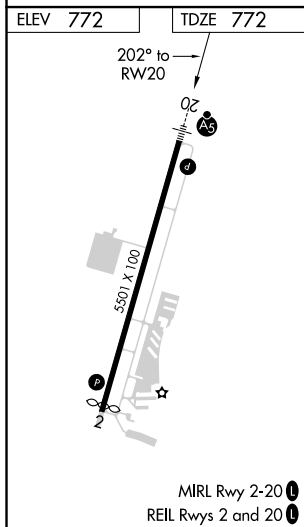
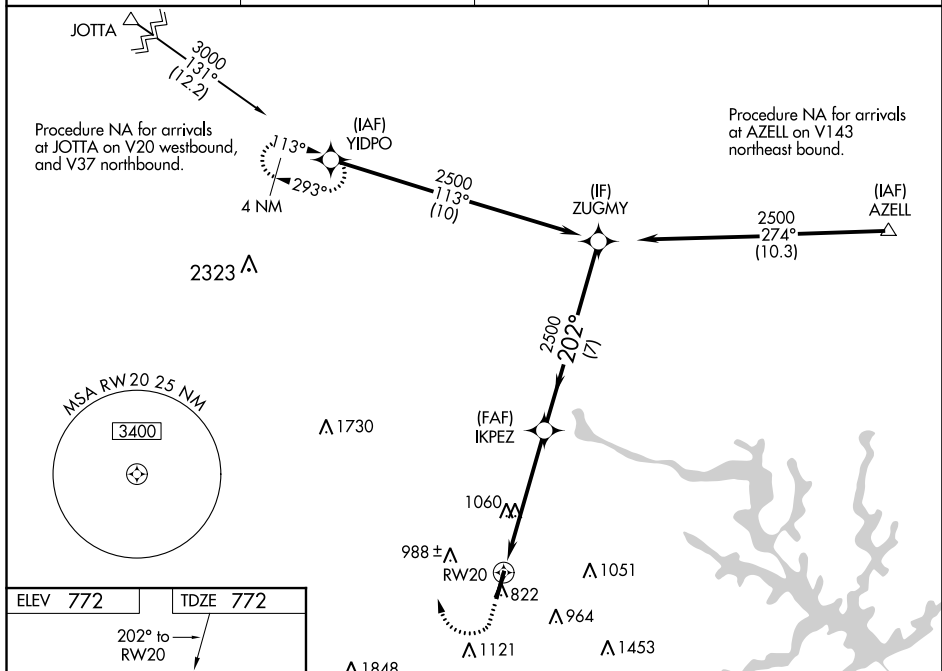
⚠ For uncompensated Baro-VNAV systems, LNAV/VNAV NA below -16° C (4°F) or above 39°C (102°F). DME/DME RNP-0.3 NA. When local altimeter setting not received, use Lexington altimeter setting and increase all DA 37 feet and all MDA 40 feet, increase LNAV Cat C and D visibility $\frac{1}{2}$ SM and Circling Cat C visibility $\frac{1}{2}$ SM and Circling Cat D $\frac{1}{4}$ SM. For inop ALS when using Lexington altimeter setting, increase LNAV Cat C and D visibility to 1 $\frac{1}{4}$ SM. VDP and Baro-VNAV NA when using Lexington altimeter setting. For inop ALS, increase LNAV/VNAV visibility to $\frac{1}{2}$ SM all Cats.

MALSR



MISSED APPROACH:
Climb to 2100 then
climbing right turn to
3400 direct YIDPO
and hold.

AWOS-3 118.175	CHARLOTTE APP CON 128.325 307.8	CLNC DEL 127.35	UNICOM 122.725 (CTAF) 0
--------------------------	---	---------------------------	-----------------------------------



2100 3400 YIDPO

*LNAV only.

*1.7 NM to RW20

RW20

IKPEZ 2500

202°

2500

ZUGMY

GP 3.00° TCH 46

1.7 NM 3.6 NM 7 NM