

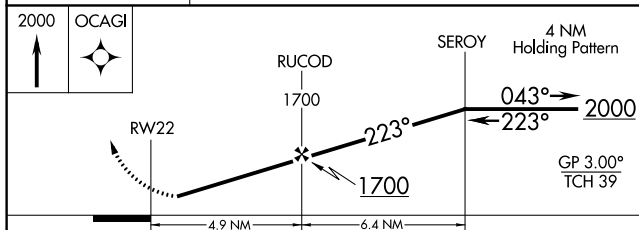
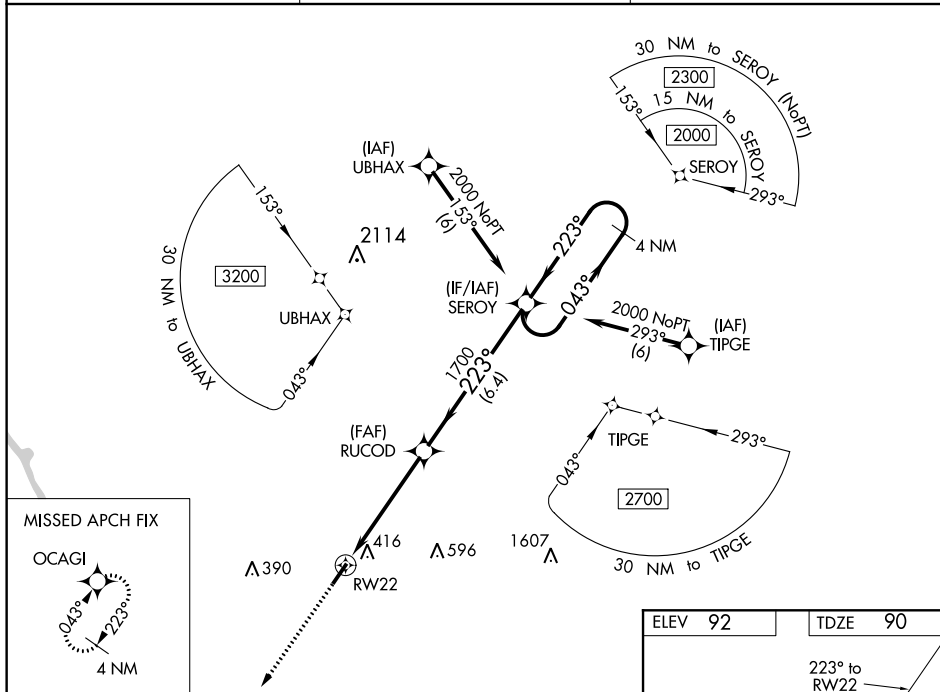
WAAS CH 45836 W22A	APP CRS 223°	Rwy Idg 4504 TDZE 90 Apt Elev 92
--	------------------------	---


RNAV (GPS) RWY 22
MARION COUNTY (MAO)

T Baro-VNAV NA when using Florence altimeter setting. For uncompensated Baro-VNAV systems, LNAV/VNAV NA below -8°C (18°F) or above 54°C (130°F). DME/DME RNP-0.3 NA. Helicopter visibility reduction below $\frac{3}{4}$ SM NA. When local altimeter setting not received, use Florence altimeter setting and increase all DA 53 feet and all visibilities $\frac{1}{4}$ mile, increase all MDA 60 feet and all Cat C/D visibilities $\frac{1}{4}$ mile.

MISSED APPROACH:
Climb to 2000 direct
OCAGI and hold.

AWOS-3 119.875	FLORENCE APP CON * 135.25 316.15	UNICOM 122.8 (CTAF)
--------------------------	--	-------------------------------



CATEGORY	A	B	C	D
LPV DA	396-1		306 (400-1)	
LNAV/ VNAV DA	577-1 $\frac{5}{8}$		487 (500-1 $\frac{5}{8}$)	
LNAV MDA	680-1	590 (600-1)	680-1 $\frac{3}{4}$	590 (600-1 $\frac{3}{4}$)
 CIRCLING	720-1	628 (700-1)	720-1 $\frac{3}{4}$ 628 (700-1 $\frac{3}{4}$)	960-2 $\frac{3}{4}$ 868 (900-2 $\frac{3}{4}$)

