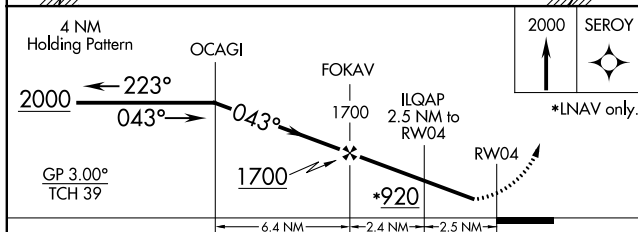
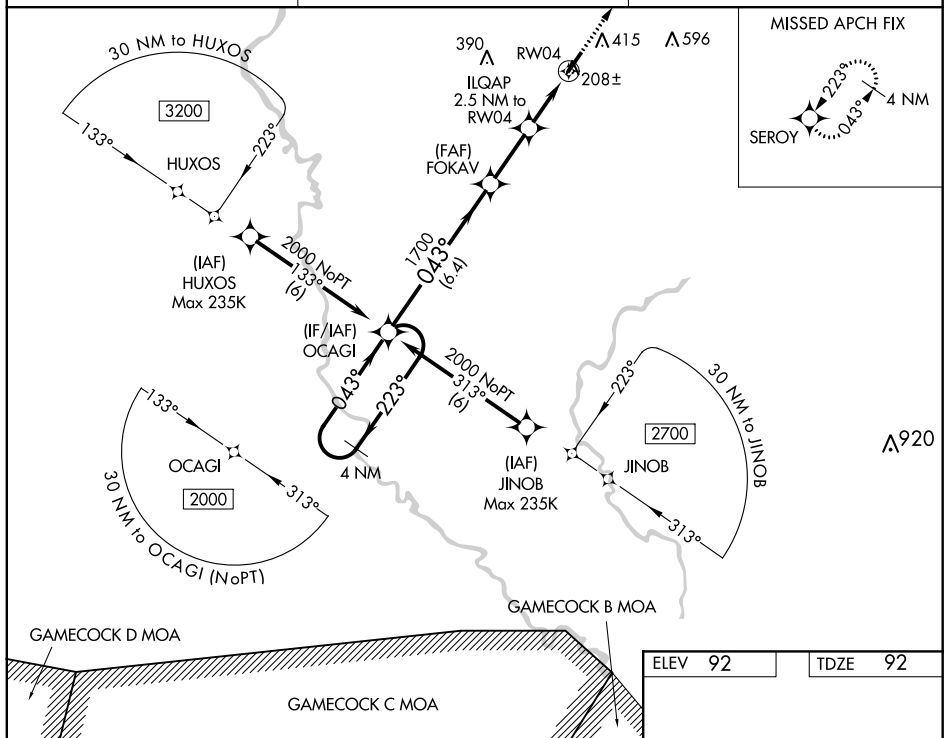


RNAV (GPS) RWY 4

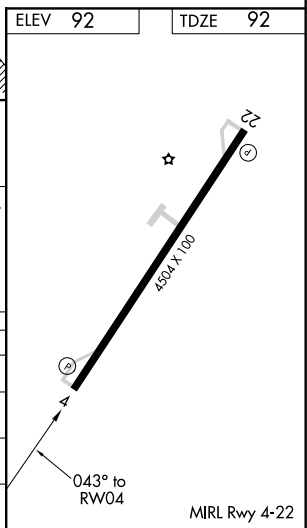
MARION COUNTY (MAO)

MISSED APPROACH:
Climb to 2000 direct
SERVOY and hold.

UNICOM
122.8 (CTAF)



CATEGORY	A	B	C	D
LPV DA	342-7 ₈	250 (300-7 ₈)	342-1	250 (300-1)
RNAV/ VNAV DA	369-7 ₈	277 (300-7 ₈)	369-1	277 (300-1)
RNAV MDA	460-1 368 (400-1)			
CIRCLING	720-1	628 (700-1)	720-1 ³ / ₄ 628 (700-1 ³ / ₄)	960-2 ³ / ₄ 868 (900-2 ³ / ₄)



SE-2, 03 DEC 2020 to 31 DEC 2020