

WAAS CH <b>60903</b> <b>W28A</b>	APP CRS <b>285°</b>	Rwy Idg <b>5456</b> TDZE <b>967</b> Apt Elev <b>968</b>
----------------------------------------	------------------------	---------------------------------------------------------------

RNAV (GPS) RWY 28

STATESVILLE RGNL (SVH)

▼

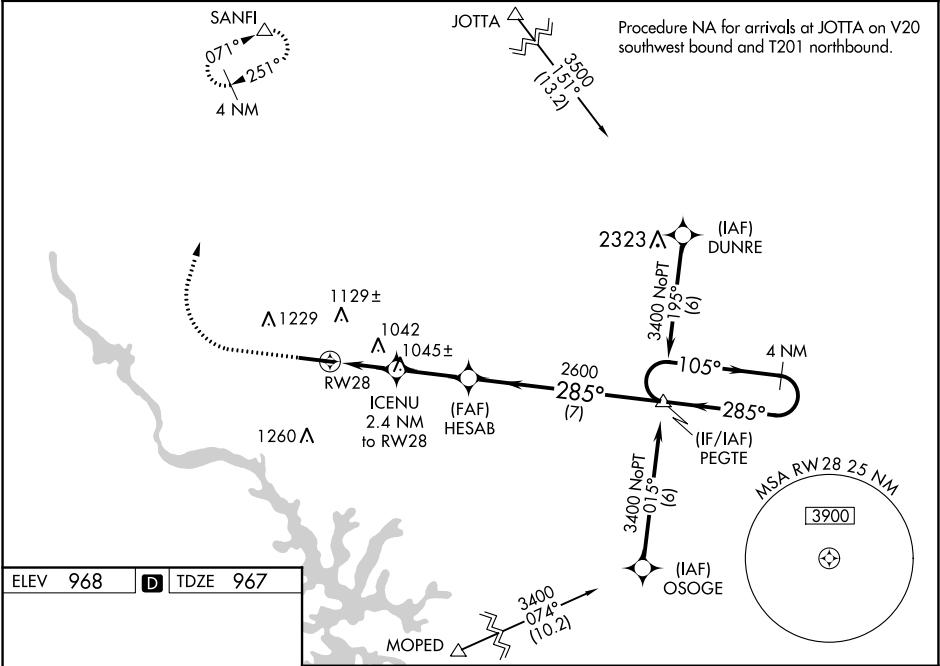
▲

For uncompensated Baro-VNAV systems, LNAV/VNAV NA below -16°C (4°F) or above 54°C (130°F). DME/DME RNP-0.3 NA. When local altimeter setting not received, use Lincolnton altimeter setting and increase LPV DA to 1218, LNAV/VNAV DA to 1269, and all MDA 60 feet; increase LNAV/VNAV all Cats and LNAV Cats C/D visibility ½ , and Circling Cat C ¼ mile. VDP and Baro-VNAV NA when using Lincolnton altimeter setting. For inop MALSR, increase LNAV/VNAV all Cats and LNAV Cats C/D visibility to ¾ mile. For inop MALSR when using Lincolnton altimeter setting, increase LNAV/VNAV all Cats and LNAV Cats C/D visibility to 1 mile.

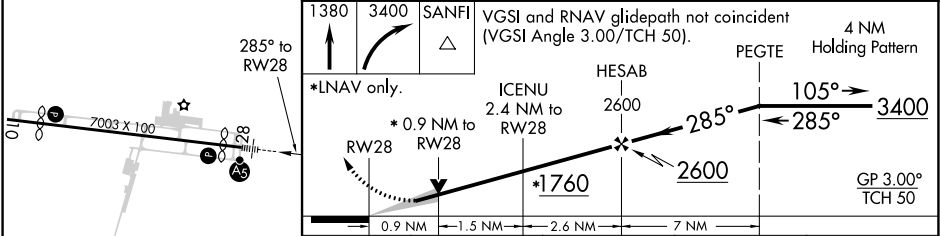
MALSR

MISSED APPROACH:  
Climb to 1380 then climbing right turn to 3400 direct SANFI and hold.

AWOS-3 <b>119.225</b>	ATLANTA CENTER <b>125.15 263.0</b>	UNICOM <b>123.075 (CTAF) ①</b>
--------------------------	---------------------------------------	-----------------------------------



ELEV <b>968</b>	<b>D</b>	TDZE <b>967</b>
-----------------	----------	-----------------



CATEGORY	A	B	C	D
LPV DA		1167-¾	200 (200-¾)	
LNAV/VNAV DA		1218-¾	251 (300-¾)	
LNAV MDA		1300-¾	333 (400-¾)	
CIRCLING	1420-1 452 (500-1)	1540-1 572 (600-1)	1540-1½ 572 (600-1½)	1560-2 592 (600-2)