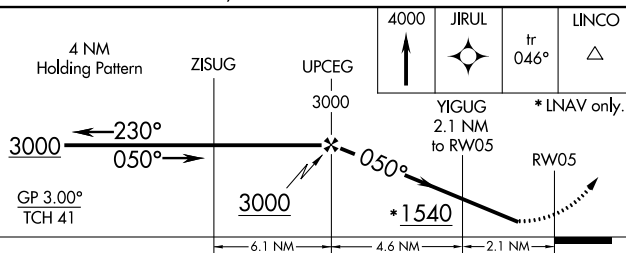
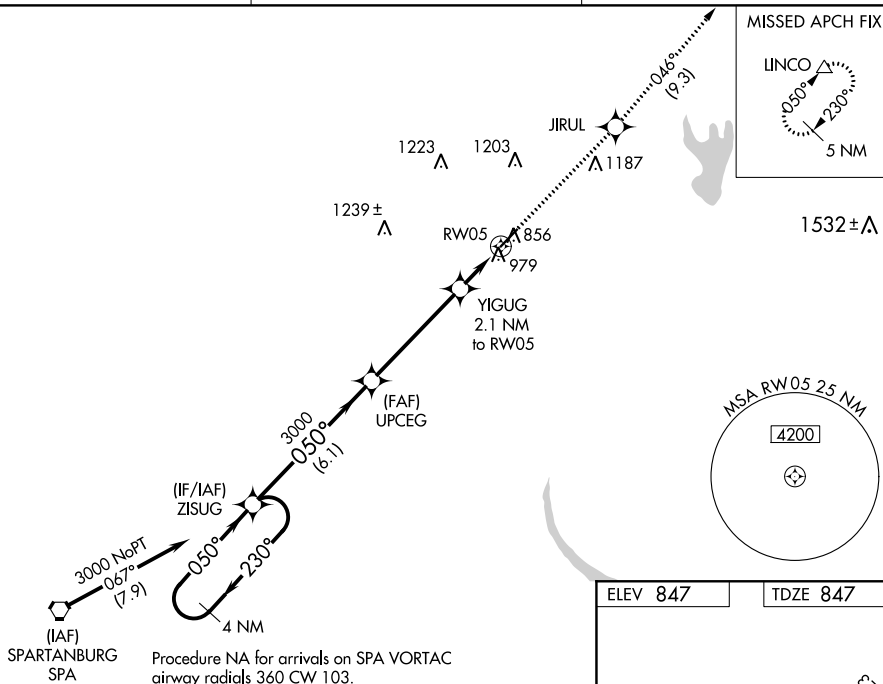


RNAV (GPS) RWY 5

SHELBY-CLEVELAND COUNTY RGNL (EHO)

MISSED APPROACH: Climb to 4000 direct JIRUL and on track 046° to LINCO and hold.

UNICOM
122.8 (CTAF) **L**

CATEGORY		A	B	C	D
LPV	DA	1097-1 250 (300-1)			
LNAV/ VNAV	DA	1173-1½ 326 (400-1½)			
LNAV	MDA	1240-1 393 (400-1)		1240-1½ 393 (400-1½)	

MIRL Rwy 5-23 **L**