

WAAS CH 69322 W03A	APP CRS 031°	Rwy Idg 5500 TDZE 1248 Apt Elev 1270
--	------------------------	---

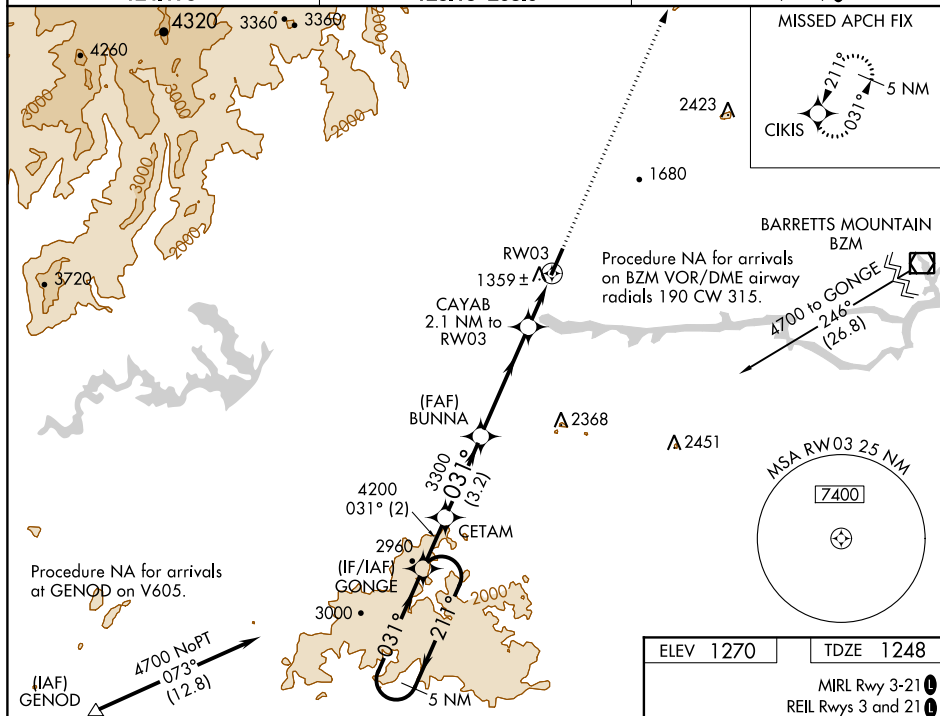
RNAV (GPS) RWY 3
FOOTHILLS RGNL (MRN)

T Baro-VNAV NA when using Hickory altimeter setting. For uncompensated Baro-VNAV systems, LNAV/VNAV NA below -17°C (2°F) or above 36°C (96°F). DME/DME RNP-0.3 NA.

A VDP NA with Hickory altimeter setting. When local altimeter setting not received use Hickory altimeter setting and increase all DA 39 feet and all MDA 40 feet; increase LNAV/VNAV all Cats visibility $\frac{1}{8}$ mile and increase LNAV Cats C and D visibility $\frac{1}{8}$ mile.

MISSED APPROACH:
Climb to 4800 direct
CIKIS and hold.

AWOS-3P 124.175	ATLANTA CENTER 125.15 263.0	UNICOM 122.7 (CTAF) 0
---------------------------	---------------------------------------	---------------------------------



5 NM Holding Pattern

VGS1 and RNAV glidepath not coincident (VGS1 Angle 3.00/TCH 66).

4800

CIKIS

GONGE

CETAM

BUNNA

CAYAB

2.1 NM to RW03

*1 NM to RW03

RW03

*LNAV only

4700

211°

031°

4200

037°

3300

*1940

GP 3.00° TCH 45

2 NM

3.2 NM

4.3 NM

1.1

1 NM

CATEGORY	A	B	C	D
LPV DA	1498-1	250 (300-1)		
LNAV/ VNAV DA	1558-1½	310 (300-1½)		
LNAV MDA	1620-1	372 (400-1)		
CIRCLING	1720-1 450 (500-1)	1760-1 490 (500-1)	1760-1½ 490 (500-1½)	1840-2 570 (600-2)

