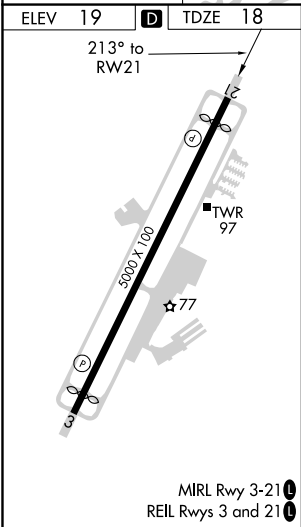
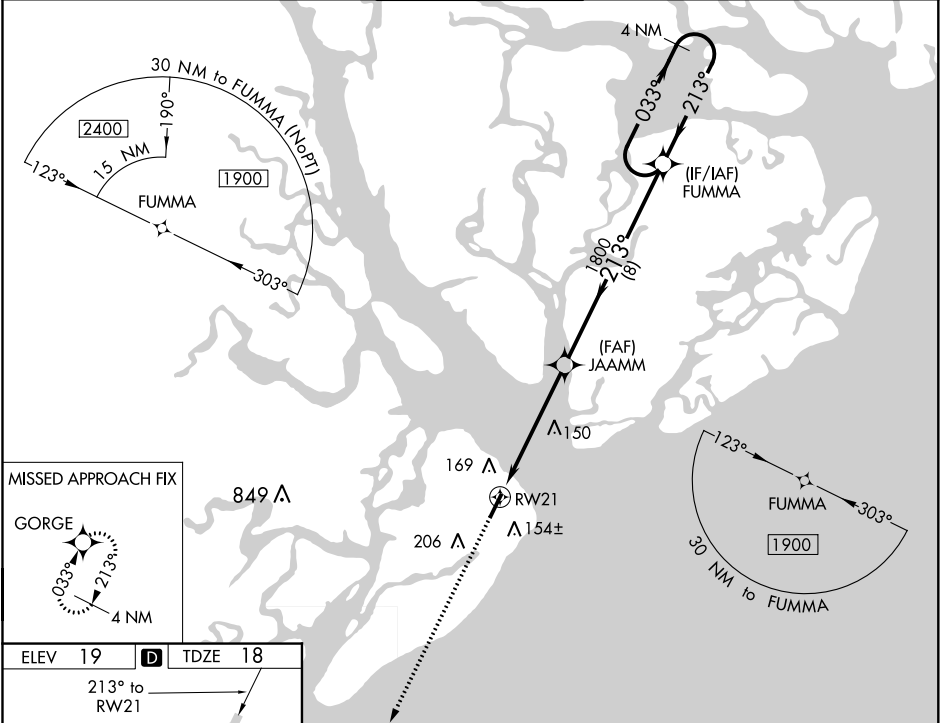


WASS CH <b>77641</b> <b>W21A</b>	APP CRS <b>213°</b>	Rwy Idg <b>4597</b> TDZE <b>18</b> Apt Elev <b>19</b>
--	------------------------	---

RNAV (GPS) RWY 21  
HILTON HEAD (HXD)

▼ For uncompensated Baro-VNAV systems, LNAV/VNAV NA below -15°C (5°F) or above 54°C (130°F). DME/DME RNP-0.3 NA. Rwy 21 helicopter visibility reduction below ¾ SM NA.	MISSED APPROACH: Climb to 1900 direct GORGE and hold.
---	---

ATIS <b>121.4</b>	SAVANNAH APP CON ★ <b>125.3 371.875</b>	HILTON HEAD TOWER ★ <b>118.975 (CTAF) 0</b>	GND CON <b>121.1</b>	CLNC DEL <b>121.1</b>
----------------------	--	--	-------------------------	--------------------------



ELEV 19	TDZE 18
213° to RWY 21	
TWR 97	
3000 x 100	
MIRL Rwy 3-21	
REIL Rwy 3 and 21	
CIRCLING	
1900	GORGE
VGSi and RNAV glidepath not coincident (VGSi Angle 3.00/TCH 40).	
*LNAV only.	
JAAMM	
*1.1 NM to RWY 21	
1800	
1800	
4 NM Holding Pattern	
033°	1900
213°	
GP 3.10°	
TCH 58	
1.1	4.2 NM
8 NM	
CATEGORY	A B C D
LPV DA	340-1 322 (400-1)
LNAV/VNAV DA	293-7/8 275 (300-7/8)
LNAV MDA	480-1 462 (500-1) 480-13/8 462 (500-13/8)
CIRCLING	480-1 461 (500-1) 520-1 501 (600-1) 520-1 501 (600-1 1/2) 580-2 561 (600-2)