

WAAS CH <b>57918</b> <b>W05A</b>	APP CRS <b>049°</b>	Rwy Idg TDZE Apt Elev	<b>4508</b> <b>191</b> <b>195</b>
--	------------------------	-----------------------------	---

RNAV (GPS) RWY 5

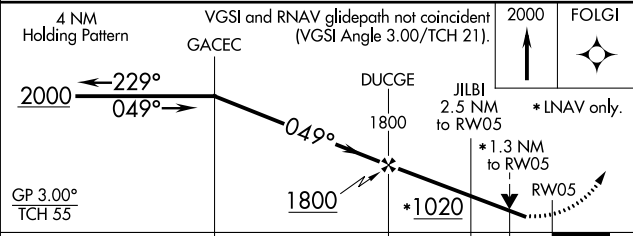
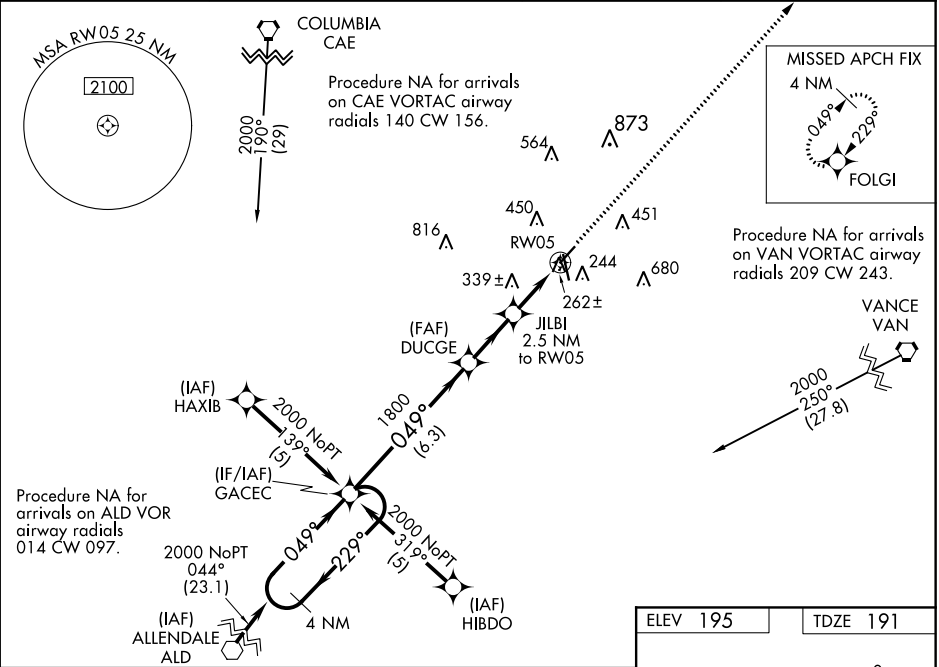
ORANGEBURG MUNI (OGB)

▼ For uncompensated Baro-VNAV systems, LNAV/VNAV NA below -15°C (5°F) or above 48°C (118°F). DME/DME RNP-0.3 NA. Rwy 5 helicopter visibility reduction below ¾ SM NA. Baro-VNAV and VDP NA when using Columbia Metropolitan altimeter setting. When local altimeter setting not received, use Columbia Metropolitan altimeter setting and increase LPV DA to 542, LNAV/VNAV DA to 683 and all MDA 80 feet, increase visibility LPV and LNAV/VNAV all Cats, LNAV Cat C/D and Circling Cat C/D ¼ SM. Night landing: Rwy 17 NA.

ODALS

MISSED APPROACH: Climb to 2000 direct FOLGI and hold.

ASOS <b>118.525</b>	COLUMBIA APP CON <b>124.15 338.2</b>	UNICOM <b>122.7 (CTAF) 0</b>	GCO <b>125.675</b>
------------------------	---	---------------------------------	-----------------------



CATEGORY	A	B	C	D
LPV DA	463-1	272 (300-1)		
LNAV/VNAV DA	604-1½	413 (500-1½)		
LNAV MDA	600-1	409 (500-1)	600-1¼ 409 (500-1¼)	600-1½ 409 (500-1½)
CIRCLING	720-1 525 (600-1)	800-1 605 (700-1)	800-1¾ 605 (700-1¾)	900-2¼ 705 (800-2¼)

