

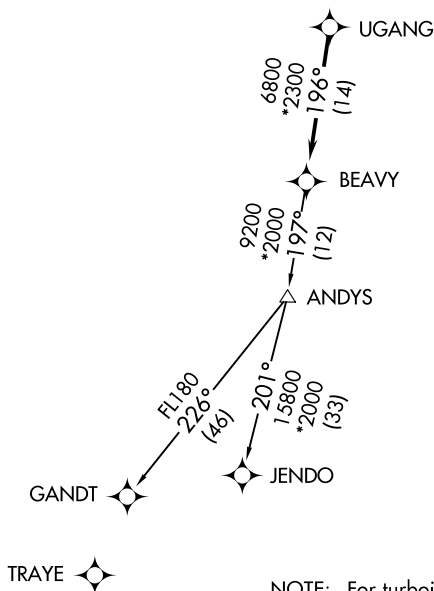
AL-5726 (FAA)

CHARLOTTE-MONROE EXECUTIVE (EQY)  
MONROE, NORTH CAROLINA

## BEAVY FIVE DEPARTURE (RNAV)

ASOS  
135.775  
CLNC DEL  
132.55  
UNICOM (CTAF)  
122.7  
CHARLOTTE DEP CON  
120.05 307.8

**TOP ALTITUDE:**  
3000



TAKEOFF MINIMUMS  
Rwys 5, 23: Standard.

NOTE: For turbojets only.

NOTE: DME/DME/IRU or GPS required.

NOTE: RNAV 1.

NOTE: RADAR required.

NOTE: If unable to accept climb rates, advise ATC on initial contact.

NOTE: Upon reaching 10000 MSL, accelerate to and maintain 280K, if unable advise ATC.

NOTE: Transponder code will be issued via PDC or Charlotte CLNC DEL.

NOTE: Chart not to scale.

## DEPARTURE ROUTE DESCRIPTION

Climb on heading assigned by ATC, expect RADAR vectors to UGANG, then on track 196° to BEAVY. Then on assigned transition. Maintain 3000, expect clearance to filed altitude within 10 minutes after departure.

GANDT TRANSITION (BEAVY5.GANDT)  
JENDO TRANSITION (BEAVY5.JENDO)

## BEAVY FIVE DEPARTURE (RNAV)

(BEAVY5.BEAVY) 03JAN19

MONROE, NORTH CAROLINA  
CHARLOTTE-MONROE EXECUTIVE (EQY)

SE-2, 03 DEC 2020 to 31 DEC 2020