

WAAS CH 90141 W23A	APP CRS 233°	Rwy Idg 7001 TDZE 671 Apt Elev 683
--	------------------------	---

RNAV (GPS) RWY 23

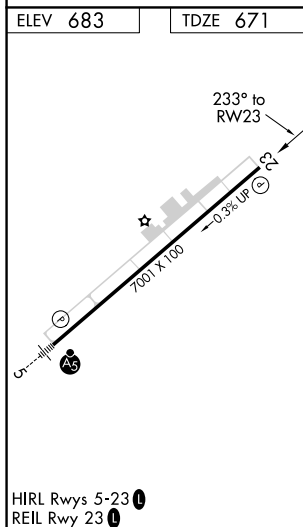
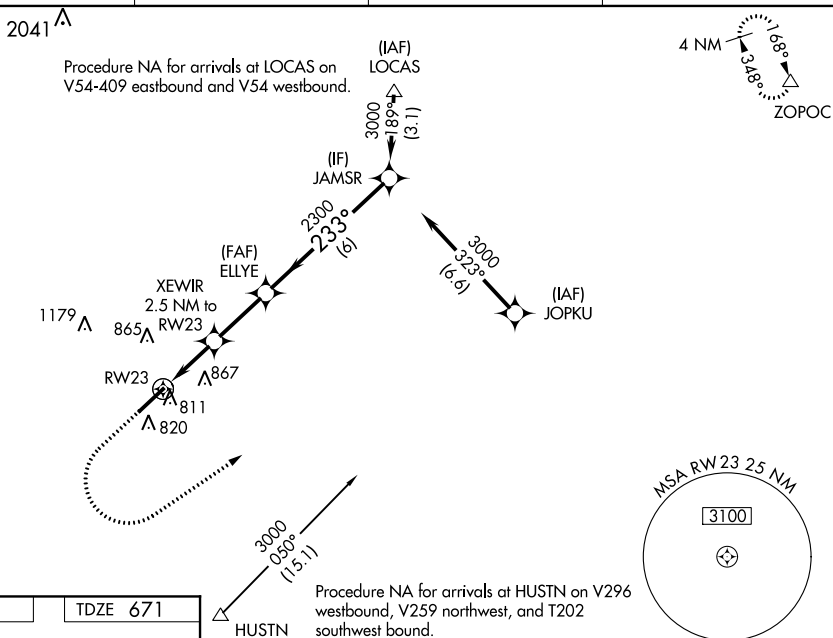
CHARLOTTE-MONROE EXECUTIVE (EQY)

▲ For uncompensated Baro-VNAV systems, LNAV/VNAV NA below -10°C (14°F) or above 54°C (130°F).
▲ Baro-VNAV and VDP NA when using Charlotte altimeter setting. DME/DME RNP-0.3 NA.

Away VNAV and VDP NA when using Charlotte altimeter setting. DME/DME RNP-U.S. NA.
 Rwy 23 helicopter visibility reduction below ¼ SM NA. When local altimeter setting not received, use Charlotte altimeter setting: increase LPV DA to 995 feet and visibility all Cats ¼ SM; increase LNAV/VNAV DA to 1037 feet and visibility all Cats ⅓ SM; increase all MDA 60 feet and LNAV Cats C/D and Circling Cat D visibility ¼ mile.

MISSED APPROACH:
Climb to 1200 then
climbing left turn to
3000 direct to
ZOPOC and hold.

ASOS 135.775	CHARLOTTE APP CON 120.05 307.8	CLNC DEL 132.55	UNICOM 122.7 (CTAF) 0
------------------------	--	---------------------------	---------------------------------



1200 ↑		3000 ↘		ZPOC △	
<p>*LNAV only</p> <p>RW23</p> <p>*1.2 NM to RW23</p> <p>XEWIR 2.5 NM to RW23</p> <p>ELLYE 2300</p> <p>233°</p> <p>3000</p> <p>JAMSR</p> <p>GP 3.00° TCH 40</p>					
1.2 NM		1.3 NM		2.5 NM	
6 NM					
CATEGORY		A		B	
LPV DA		939-7 $\frac{1}{8}$		268 (300-7 $\frac{1}{8}$)	
LNAV/VNAV DA		981-1 $\frac{1}{8}$		310 (300-1 $\frac{1}{8}$)	
LNAV MDA		1080-1 409 (400-1)		1080-1 $\frac{1}{8}$ 409 (400-1 $\frac{1}{8}$)	
C CIRCLING		1220-1 537 (600-1)		1220-1 $\frac{1}{2}$ 537 (600-1 $\frac{1}{2}$)	
				1480-2 $\frac{1}{2}$ 797 (800-2 $\frac{1}{2}$)	