

WAAS CH 70435 W22A	APP CRS 222°	Rwy Idg 6900 TDZE 152 Apt Elev 158
--	------------------------	---

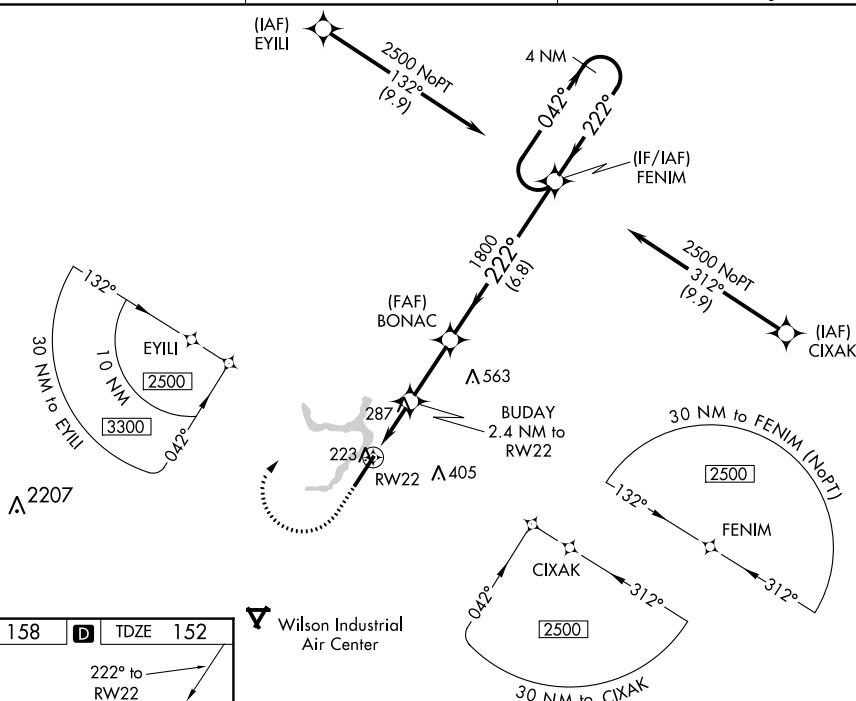
RNAV (GPS) RWY 22

ROCKY MOUNT-WILSON RGNL (RWI)

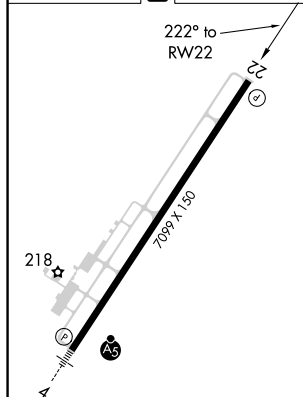
T For uncompensated Baro-VNAV systems, LNAV/VNAV NA below -10°C (14°F) or above 54°C (130°F). DME/DME RNP-0.3 NA. Baro-VNAV and VDP NA when using Wayne Executive Jetport altimeter setting. When local altimeter setting not received, use Wayne Executive Jetport altimeter setting and increase all DA 59 feet and all visibilities $\frac{1}{4}$ mile; increase all MDA 60 feet and LNAV Cats C/D and Circling Cat C visibility $\frac{1}{4}$ mile. Rwy 22 helicopter visibility reduction below $\frac{3}{4}$ SM NA.

MISSED APPROACH:
Climb to 1000 then
climbing right turn to
2500 direct FENIM
and hold.

ASOS 118.875	WASHINGTON CENTER 123.85 279.65	UNICOM 123.05 (CTAF) 0
------------------------	---	----------------------------------

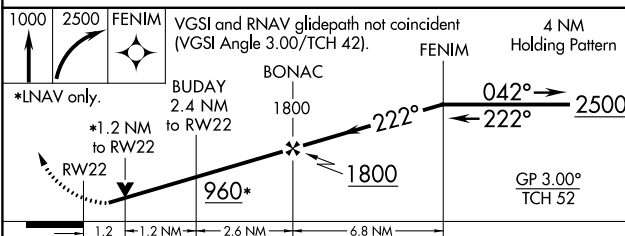


ELEV	158	D	TDZE	152
------	-----	----------	------	-----



REIL Rwy 22 **L**
HIRL Rwy 4-22 **L**

 Wilson Industrial
Air Center



CATEGORY	A	B	C	D
LPV DA	436- $\frac{7}{8}$ 284 (300- $\frac{7}{8}$)			
INAV/INAV DA	513-1 $\frac{1}{8}$ 361 (400-1 $\frac{1}{8}$)			
INAV MDA	560-1	408 (500-1)	560-1 $\frac{1}{8}$	408 (500-1 $\frac{1}{8}$)
C CIRCLING	600-1 442 (500-1)	620-1 462 (500-1)	720-1 $\frac{1}{2}$ 562 (600-1 $\frac{1}{2}$)	760-2 602 (700-2)