

VORTAC TYI	APP CRS	Rwy Idg	6900
117.8	238°	TDZE	154
Chan 125		Apt Elev	159

VOR/DME RWY 22

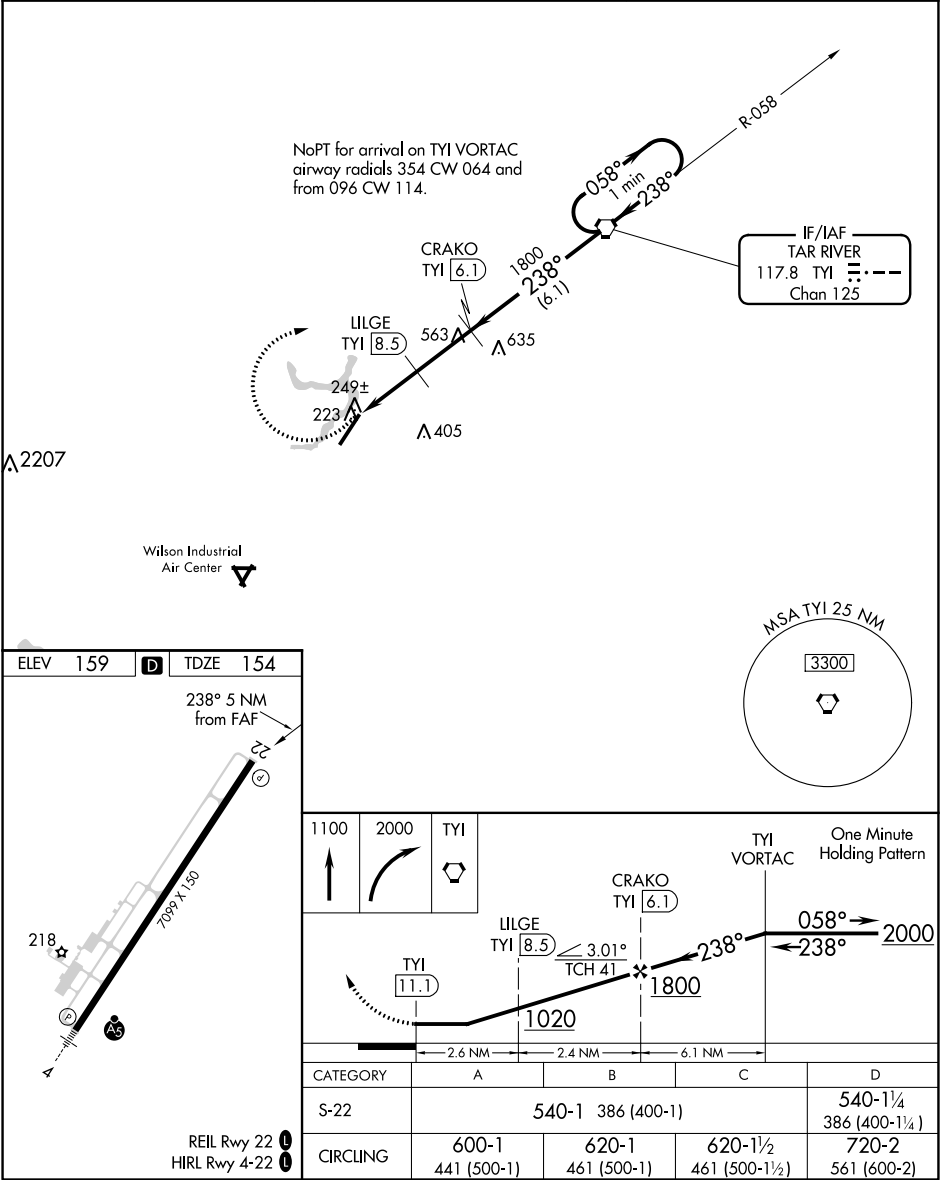
ROCKY MOUNT-WILSON RGNL (RWI)

⚠

Helicopters visibility reduction below 1 SM NA. When local altimeter setting not received, use Wayne Executive Jetport altimeter setting and increase all MDA 60 feet, and S-22 Cat C and Cat D visibility ¼ mile. Rwy 22 Straight-in and Circling minimums NA at night.

MISSED APPROACH: Climb to 1100 then climbing right turn to 2000 direct TYI VORTAC and hold.

ASOS 118.875	WASHINGTON CENTER 123.85 279.65	UNICOM 123.05 (CTAF) 0
-----------------	------------------------------------	---------------------------



SE-2, 03 DEC 2020 to 31 DEC 2020

SE-2, 03 DEC 2020 to 31 DEC 2020