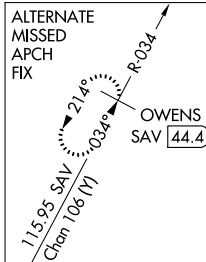


ILS Y or LOC Y RWY 23  
LOWCOUNTRY RGNL (R.B.W.)

**MISSED APPROACH:** Climb to 700 then climbing right turn to 2000 on heading 360° and CHS VORTAC R-282 to STOAS/CHS VORTAC 34.3 DME and hold, continue climb-in-hold to 2000.

UNICOM  
122.8 (CTAF) **L**

700 ↑	2000 hdg 360°	CHS R-282	STOAS △	VGSI and ILS glidepath not coincident (VGSI Angle 3.00°/TCH 46).		LAMKE I-RBW 12.6	One Minute Holding Pattern
*LOC only.							
CATEGORY	A		B		C		D
S-ILS 23	301- $\frac{3}{4}$ 200 (200- $\frac{3}{4}$ )						
S-LOC 23	480- $\frac{3}{4}$ 379 (400- $\frac{3}{4}$ )			480-1 379 (400-1)			
CIRCLING	620-1 519 (600-1)	640-1 539 (600-1)	700-1 $\frac{1}{2}$ 599 (600-1 $\frac{1}{2}$ )	700-2 599 (600-2)			