

WAAS CH <b>93616</b> <b>W17A</b>	APP CRS <b>171°</b>	Rwy Idg TDZE <b>93</b> Apt Elev <b>101</b>	<b>5705</b>
--	------------------------	--	-------------

RNAV (GPS) RWY 17

LOWCOUNTRY RGNL (RBW)

⚠

For uncompensated Baro-VNAV systems, LNAV/VNAV NA below -15°C (5°F) or above 54°C (130°F). Baro-VNAV and VDP NA when using Charleston Int/AFB altimeter setting.

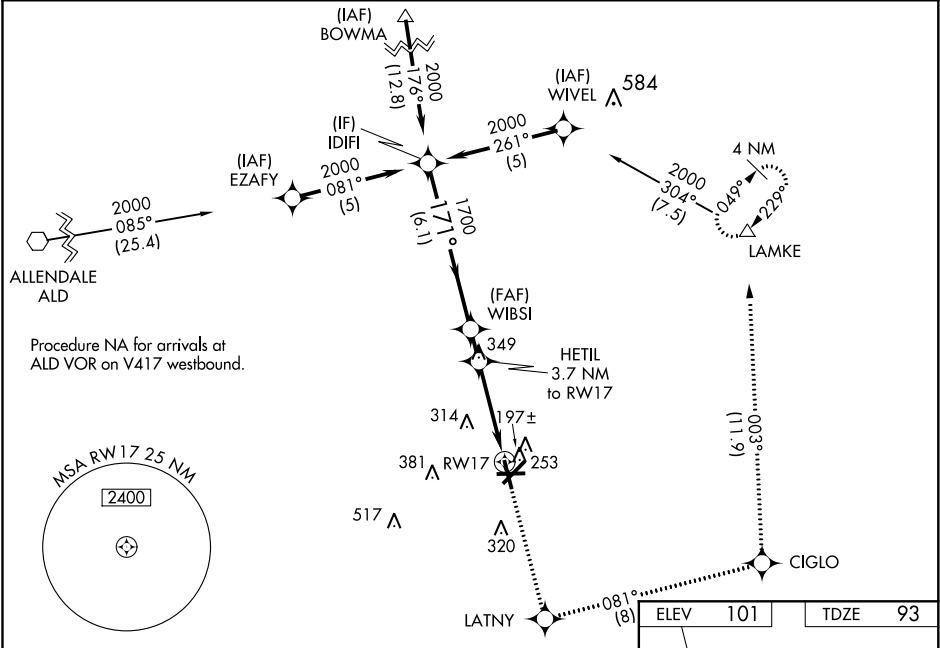
⚠

DME/DME RNP-0.3 NA. When local altimeter setting not received, use Charleston AFB/Int altimeter setting: increase LPV DA to 421 feet and LNAV/VNAV DA to 587 feet and all MDA 80 feet; increase LPV visibility all Cats ¼ mile; increase LNAV/VNAV visibility all Cats, LNAV Cats C/D, and Circling Cat D visibility ¼ mile; increase Circling Cat C visibility ½ mile.

MISSED APPROACH:

Climb to 2100 direct LATNY and on track 081° to CIGLO and track 003° to LAMKE and hold.

AWOS-3 <b>118.725</b>	CHARLESTON APP CON <b>120.7 306.925</b>	GCO <b>121.725</b>	UNICOM <b>122.8 (CTAF) 0</b>
--------------------------	--	-----------------------	---------------------------------



2100

LATNY

tr 081°

CIGLO

tr 003°

LAMKE

GP 3.00°

TCH 40

2000

171°

1700

3.7 NM to RW17

1.4 NM to RW17

\*1300

RW17

\*LNAV only.

CATEGORY	A	B	C	D
LPV DA	343-1 250 (300-1)			
LNAV/VNAV DA	508-1½ 415 (500-1½)			
LNAV MDA	580-1 487 (500-1)		580-1¾ 487 (500-1¾)	
CIRCLING	620-1 519 (600-1)		700-2 599 (600-2)	

REIL Rwy 23

MIRL Rwy 5-23 0