

WAAS CH 48916 W35A	APP CRS 351°	Rwy Idg TDZE 95 Apt Elev 101	5705
--	------------------------	--	-------------

RNAV (GPS) RWY 35

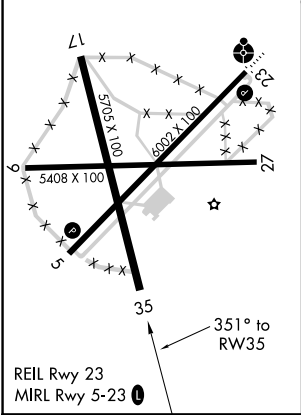
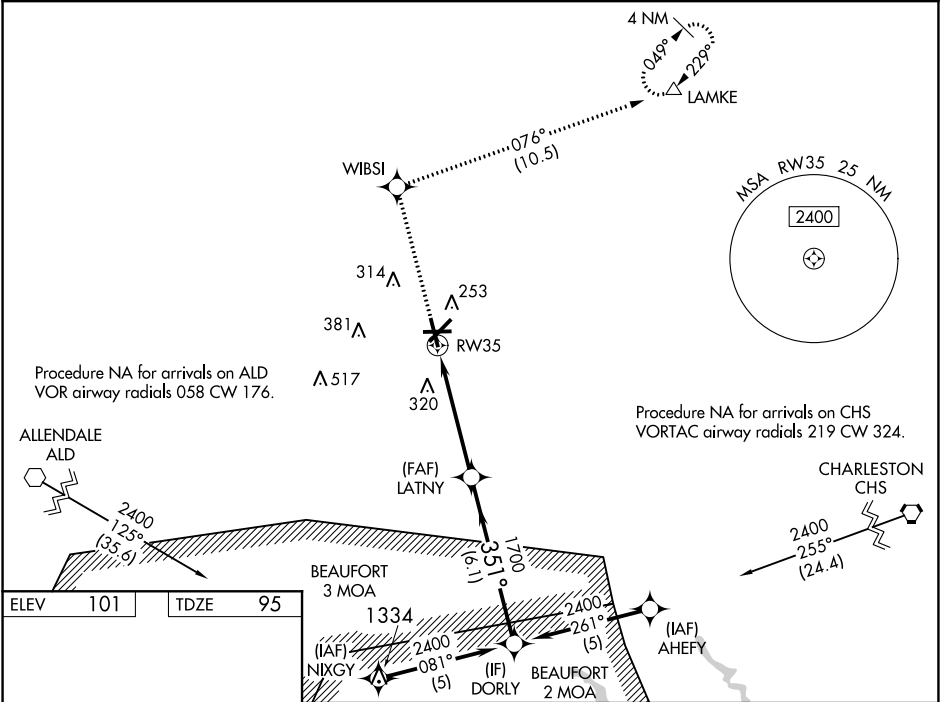
LOWCOUNTRY RGNL (RBW)

⚠ For uncompensated Baro-VNAV systems, LNAV/VNAV NA below -15°C (5°F) or above 54°C (130°F). Baro-VNAV and VDP NA when using Charleston AFB/Intl altimeter setting.

⚠ DME/DME RNP-0.3 NA. When local altimeter setting not received, use Charleston AFB/Intl altimeter setting: increase LPV DA to 476 feet and LNAV/VNAV DA to 525 feet and all MDA 80 feet; increase LPV visibility all Cats, LNAV/VNAV visibility all Cats, LNAV Cats C/D visibility, and Circling Cat D visibility ¼ mile; increase Circling Cat C visibility ½ mile.

MISSED APPROACH:
Climb to 2100 direct WIBSI and on track 076° to LAMKE and hold.

AWOS-3 118.725	CHARLESTON APP CON 120.7 306.925	GCO 121.725	UNICOM 122.8 (CTAF) 0
--------------------------	--	-----------------------	---------------------------------



2100	WIBSI	tr 076°	LAMKE				
* LNAV only.							
RW35		* 1.3 NM to RW35		LATNY	DORLY		
				1700	2400		
				1700	GP 3.00° TCH 40		
		1.3 NM		3.6 NM		6.1 NM	
CATEGORY	A		B		C		D
LPV DA	398-1 303 (300-1)						
LNAV/VNAV DA	447-1¼ 352 (400-1¼)						
LNAV MDA	560-1 465 (500-1)			560-1¾ 465 (500-1¾)			
CIRCLING	620-1 519 (600-1)		640-1 539 (600-1)		700-1½ 599 (600-1½)		700-2 599 (600-2)