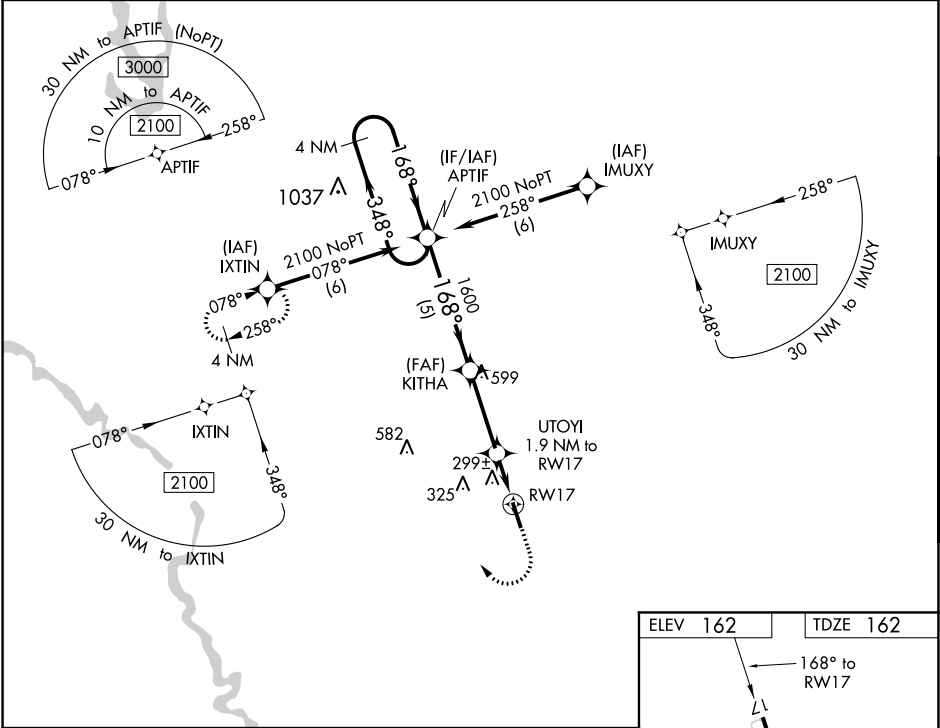


WAAS CH 45733 W17A	APP CRS 168°	Rwy Idg TDZE Apt Elev	4990 162 162
--	------------------------	-----------------------------	---

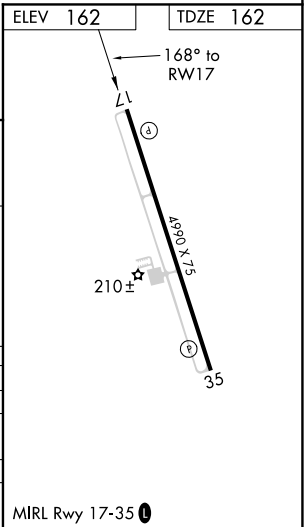
RNAV (GPS) RWY 17
ALLENDALE COUNTY (A/QX)

RNP APCH.	For uncompensated Baro-VNAV systems, LNAV/VNAV NA below -15°C or above 54°C. Rwy 17 helicopter visibility reduction below ¾ SM NA. Baro-VNAV and VDP NA when using Augusta Rgnl at Bush Field altimeter setting. When local altimeter setting not received, use Augusta Rgnl at Bush Field altimeter setting and increase all DA 99 feet and all MDA 100 feet, increase LPV all Cats visibility ¼ mile, LNAV/VNAV all Cats ⅓ mile.	MISSED APPROACH: Climb to 1000 then climbing right turn to 2100 direct IXTIN and hold.
-----------	--	--

AWOS-3PT 118.95	JACKSONVILLE CENTER 132.925 363.2	UNICOM 122.8 (CTAF) 0
---------------------------	---	---------------------------------



VGSI and RNAV glidepath not coincident (VGSI Angle 3.00/TCH 26).			
4 NM Holding Pattern	APTIF	KITHA	UTOYI
2100 ← 348° 168° →	168°	1800	1.9 NM to RW17
GP 3.00° TCH 39°	1800	*800	1.1 NM to RW17
5 NM 3.1 NM 0.8 NM 1.1 NM			
CATEGORY	A	B	C
LPV DA	478-1½	316 (400-1½)	NA
LNAV/VNAV DA	562-1¾	400 (400-1¾)	NA
LNAV MDA	560-1	398 (400-1)	NA
CIRCLING	620-1 458 (500-1)	640-1 478 (500-1)	NA



SE-2, 03 DEC 2020 to 31 DEC 2020

SE-2, 03 DEC 2020 to 31 DEC 2020