

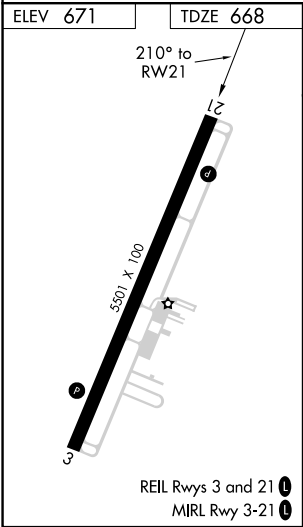
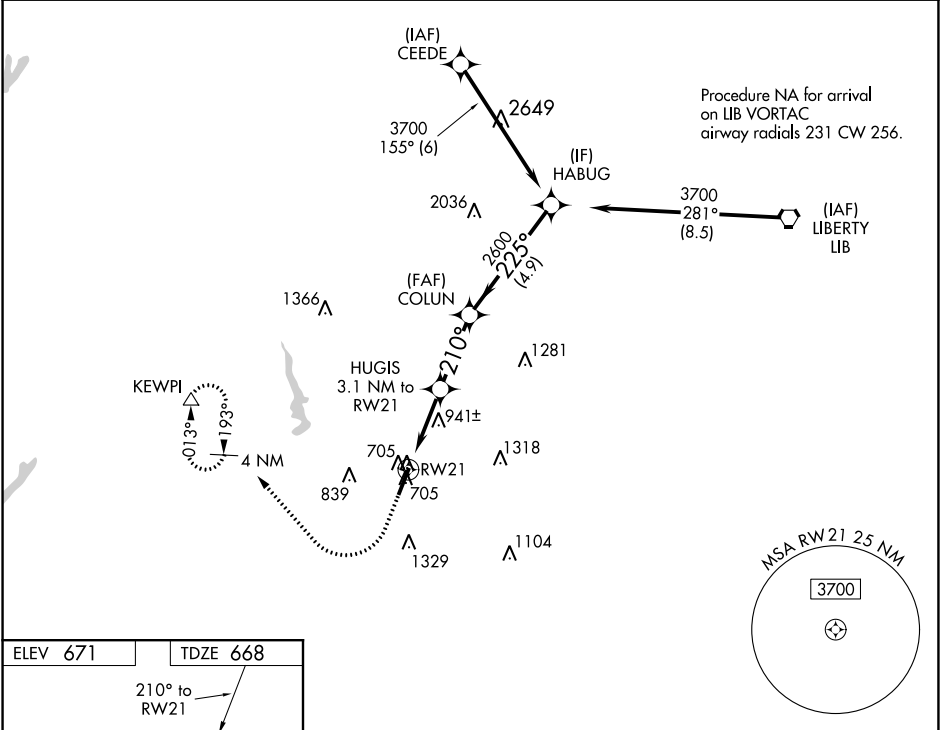
WAAS CH 53739 W21A	APP CRS 210°	Rwy Idg TDZE 668 Apt Elev 671
--	------------------------	---

RNAV (GPS) RWY 21
ASHEBORO RGNL (HBI)

For uncompensated Baro-VNAV systems, LNAV/VNAV NA below -16°C (4°F) or above 54°C (130°F). Rwy 21 helicopter visibility reduction below ¾ SM NA. DME/DME RNP-0.3 NA.

MISSED APPROACH: Climb to 3000 then right turn direct KEWPI and hold.

AWOS-3 119.275	GREENSBORO APP CON 126.6 327.075	UNICOM 122.8 (CTAF) 0
--------------------------	--	---------------------------------



3000	KEWPI	VGSI and RNAV glidepath not coincident (VGSI Angle 3.00°/TCH 35)		HABUG
*LNAV only.		HUGIS 3.1 NM to RWY 21	COLUN 2600	3700
RWY 21		*1.6 NM to RWY 21	*1680	2600
		1.6 NM	1.5 NM	2.8 NM
				4.9 NM
CATEGORY	A	B	C	D
LPV DA	918-7/8		250 (300-7/8)	
LNAV/VNAV DA	1069-13/8		401 (400-13/8)	
LNAV MDA	1200-1	532 (600-1)	1200-1 1/2	532 (600-1 1/2)
CIRCLING	1240-1 569 (600-1)	1360-1 689 (700-1)	1680-3	1009 (1100-3)