

WAAS CH 99321 W24B	APP CRS 240°	Rwy Idg 5002 TDZE 144 Apt Elev 144
--	------------------------	---

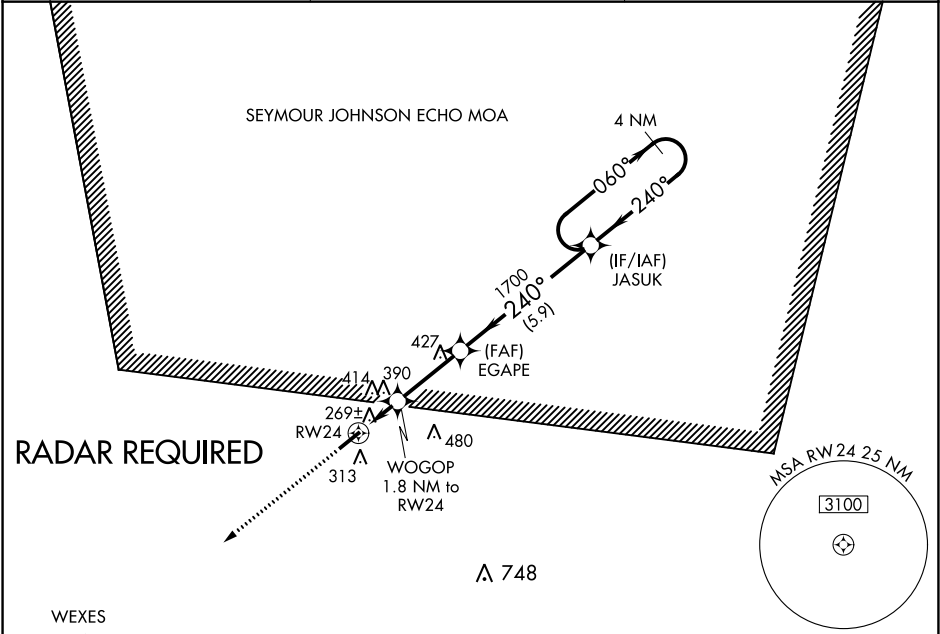
RNAV (GPS) Y RWY 24




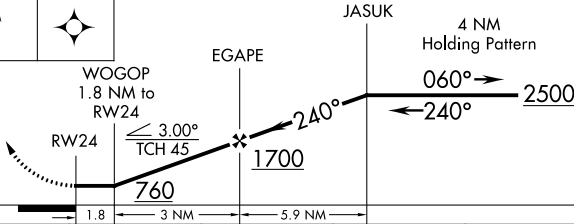
CLINTON-SAMPSON COUNTY (CTZ)

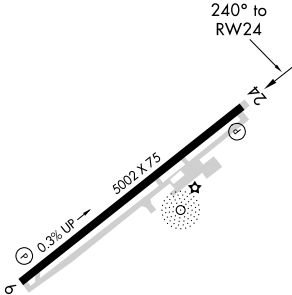
⚠ Rwy 24 helicopter visibility reduction below 1 SM NA. Straight-in Rwy 24 NA at night, Circling Rwy 24 NA at night. DME/DME RNP-0.3 NA. When local altimeter setting not received, use Kenansville altimeter setting and increase all MDA 60 feet, increase LNAV, LP and Circling Cats C and D visibility ¼ mile.

MISSED APPROACH: Climb to 2500 direct WEXES and hold.

AWOS-3 119.125	FAYETTEVILLE APP CON 133.0 290.25	UNICOM 122.8 (CTAF) 0
--------------------------	---	---------------------------------



		ELEV 144		TDZE 144	
2500	WEXES				
					
					
CATEGORY	A	B	C	D	
LP MDA	520-1 376 (400-1)				
LNAV MDA	640-1 496 (500-1)		640-1¾ 496 (500-1¾)		
CIRCLING	680-1 536 (600-1)		780-1¾ 636 (700-1¾)		780-2 636 (700-2)



240° to RW24

0.3% UP

5002 X 75

MIRL Rwy 6-24

REIL Rws 6 and 24