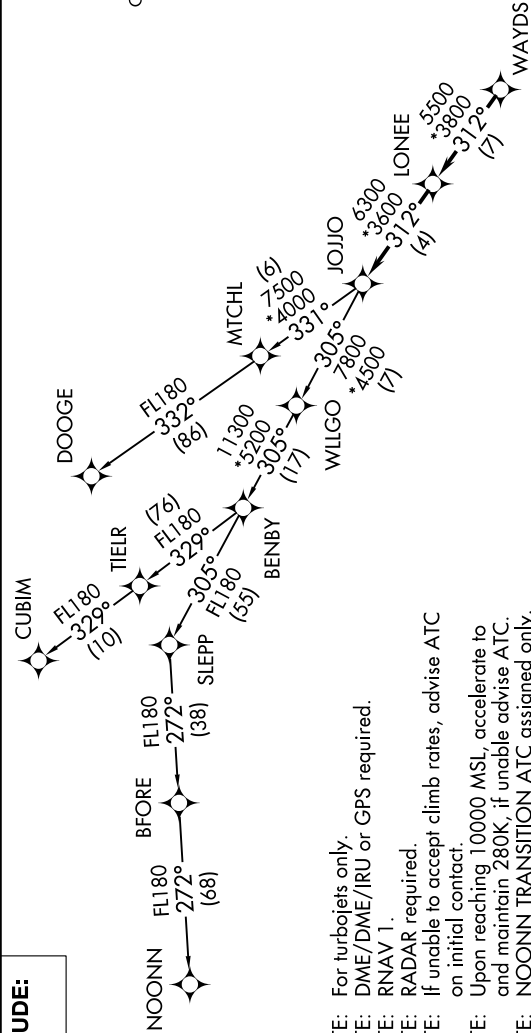


TOP ALTITUDE:
3000



- NOTE: For turbojets only.
- NOTE: DME/DME/IRU or GPS required.
- NOTE: RNAV 1.
- NOTE: RADAR required.
- NOTE: If unable to accept climb rates, advise ATC on initial contact.
- NOTE: Upon reaching 10000 MSL, accelerate to and maintain 280K; if unable advise ATC.
- NOTE: NOONN TRANSITION ATC assigned only.

DEPARTURE ROUTE DESCRIPTION

Climb on heading assigned by ATC, expect RADAR vectors to WAYDS, then on depicted route to JOJJO. Then on assigned transition. Maintain 3000, expect clearance to filed altitude within 10 minutes after departure.

- CUBIM TRANSITION (JOJJO4.CUBIM)
- DOOGE TRANSITION (JOJJO4.DOOGE)
- NOONN TRANSITION (JOJJO4.NOONN)

TAKEOFF MINIMUMS
Rwys 6, 24: Standard.

NOTE: Chart not to scale.