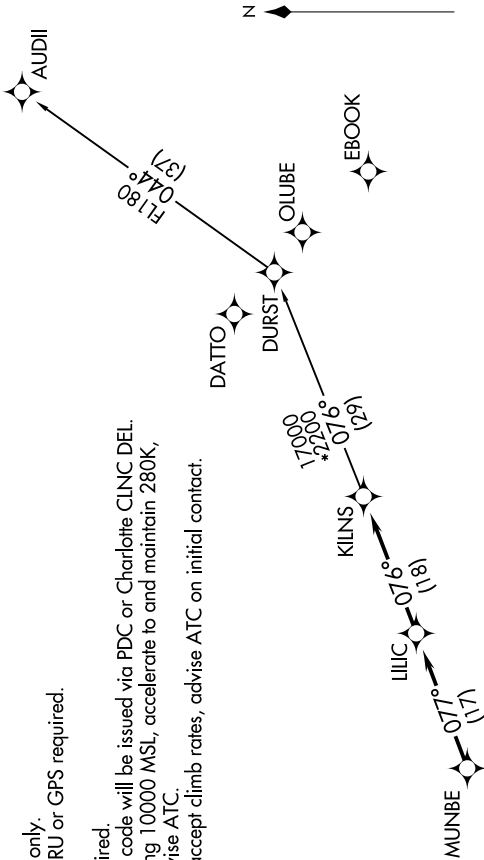


SE-2, 03 DEC 2020 to 31 DEC 2020

AWOS-3  
120.825  
GCO  
121.725  
UNCOM (CTAF)  
122.725  
CHARLOTTE DEP CON  
120.05 307.8

- NOTE: For turbojets only.
- NOTE: DME/DME/IRU or GPS required.
- NOTE: RNAV 1.
- NOTE: RADAR required.
- NOTE: Transponder code will be issued via PDC or Charlotte CLNC DEL.
- NOTE: Upon reaching 10000 MSL, accelerate to and maintain 280K, if unable advise ATC.
- NOTE: If unable to accept climb rates, advise ATC on initial contact.

TOP ALTITUDE:  
3000



TAKEOFF MINIMUMS  
Rwys 6, 24: Standard.

DEPARTURE ROUTE DESCRIPTION

Climb on heading assigned by ATC, expect RADAR vectors to MUNBE, then on depicted route to KILNS, then on AUDII transition. Maintain 3000. Expect clearance to filed altitude within 10 minutes after departure.

AUDII TRANSITION (KILNS4.AUDII)

NOTE: Chart not to scale.

SE-2, 03 DEC 2020 to 31 DEC 2020