

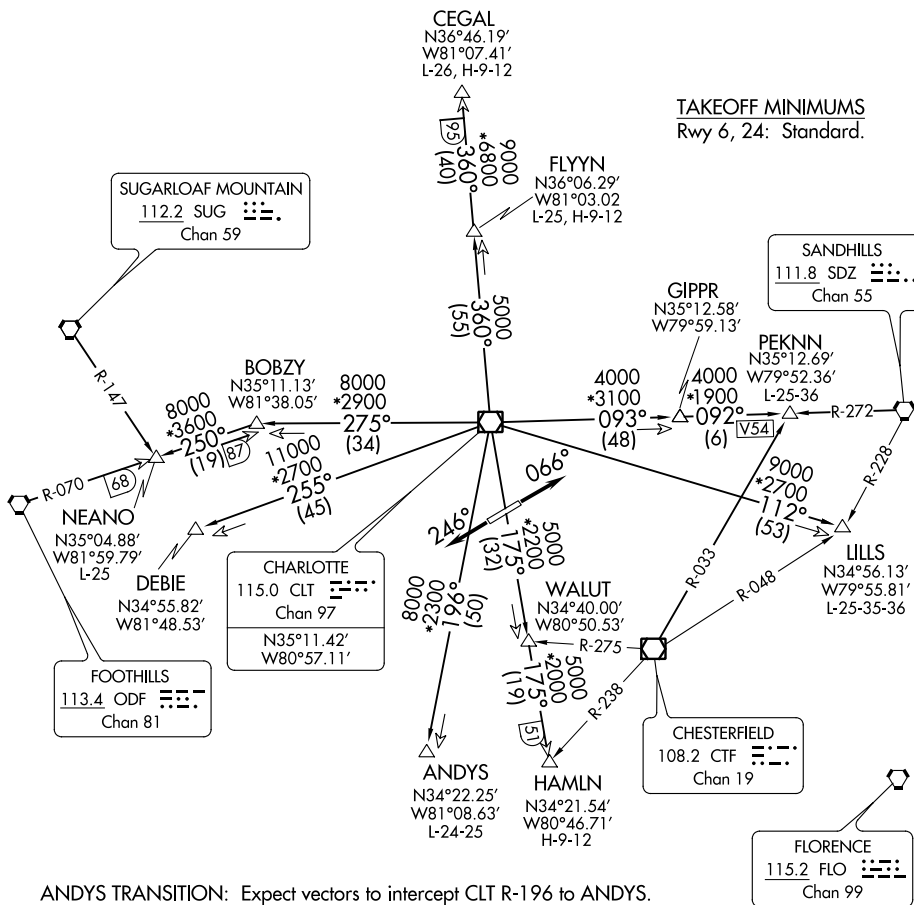
KNIGHTS TWO DEPARTURE

AWOS-3
120.825
GCO
121.725
UNICOM (CTAF)
122.725
CHARLOTTE DEP CON
120.05 307.8

NOTE: For propeller aircraft only.
NOTE: RADAR and DME required.
NOTE: Turboprops: Operate in a manner that will result in best forward speed and climb rate.
NOTE: Transponder code will be issued via Charlotte clearance delivery.

TOP ALTITUDE:
3000

TAKEOFF MINIMUMS
Rwy 6, 24: Standard.



ANDYS TRANSITION: Expect vectors to intercept CLT R-196 to ANDYS.
 CEGAL TRANSITION: Expect vectors to intercept CLT R-360 to CEGAL.
 DEBIE TRANSITION: Expect vectors to intercept CLT R-255 to DEBIE.
 FLYYN TRANSITION: Expect vectors to intercept CLT R-360 to FLYYN.
 HAMLN TRANSITION: Expect vectors to intercept CLT R-175 to HAMLN.
 LILLS TRANSITION: Expect vectors to intercept CLT R-112 to LILLS.
 NEANO TRANSITION: Expect vectors to intercept CLT R-275 to BOBZY then ODF R-070 to NEANO.
 PEKNN TRANSITION: Expect vectors to intercept CLT R-093 to GIPPR then SDZ R-272 to PEKNN.

(NARRATIVE ON FOLLOWING PAGE)

NOTE: Chart not to scale.

KNIGHTS TWO DEPARTURE

(KNI2.KNI) 03JAN19

LANCASTER, SOUTH CAROLINA
LANCASTER COUNTY-MC WHIRTER FIELD (LKR)

SE-2, 03 DEC 2020 to 31 DEC 2020