

LOC/DME I-OAJ 108.7 Chan 24	APP CRS 052°	Rwy Idg TDZE Apt Elev 93	7100 89
---	------------------------	---------------------------------------	--------------------------

ILS or LOC RWY 5
ALBERT J ELLIS (OAJ)

VDP NA with Wilmington altimeter setting. When local altimeter setting not received, use Wilmington altimeter setting and increase all DA 93 feet and all MDA 100 feet, increase S-LOC 5 Cats C/D visibility ¼ mile, increase Circling Cat C visibility ½ mile; increase OGOYO fix minimums, S-LOC 5 Cats C/D visibility ¾ mile. For inoperative MALS, increase S-LOC 5 Cats C/D visibility to 1 ¾ mile, increase OGOYO fix minimums S-LOC 5 Cats C/D visibility to 1 mile. For inoperative MALS when using Wilmington altimeter setting, increase S-ILS 5 all Cats visibility to ¾ mile, increase S-LOC 5 Cats C/D visibility to 1 ¾ mile, increase OGOYO fix minimums S-LOC 5 Cats C/D visibility to 1 ¾ mile. ADF required.

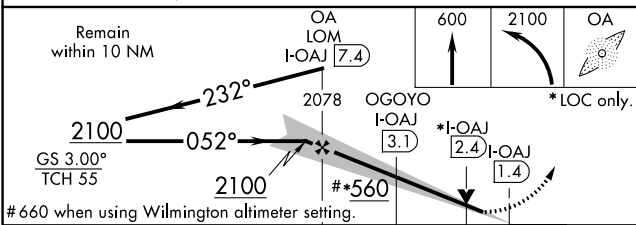
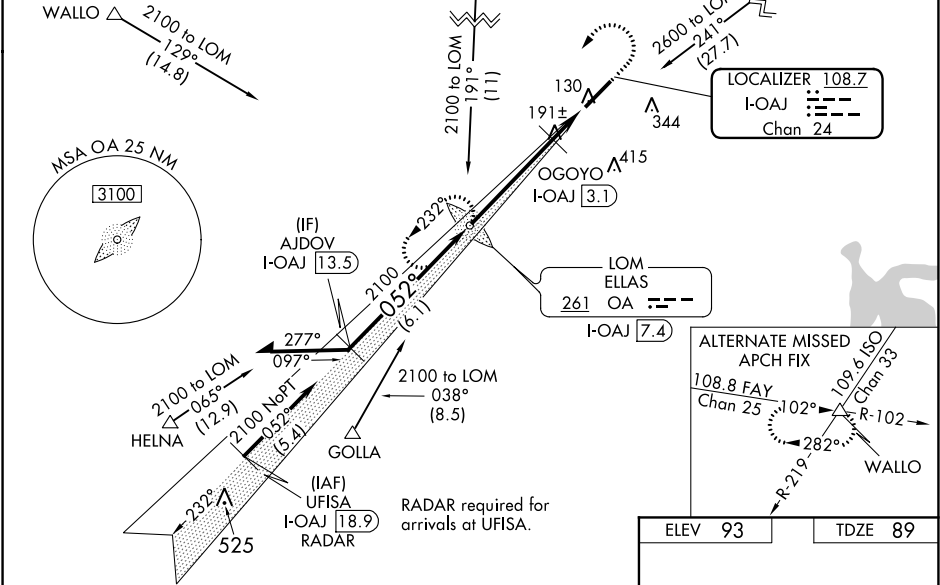
MALS



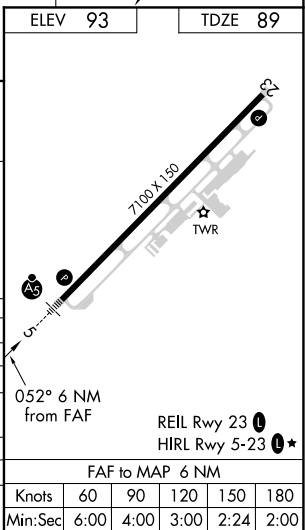
MISSED APPROACH:
Climb to 600 then
climbing left turn to
2100 direct ELLAS
LOM/I-OAJ 7.4 DME
and hold.

ATIS 124.475	WILMINGTON APP CON ★ 135.75 317.425	ELLIS TOWER ★ 132.65 (CTAF)	GND CON 125.4	CLNC DEL 121.4 257.6 (when twr closed)	UNICOM 122.95
------------------------	---	---------------------------------------	-------------------------	---	-------------------------

ADF or DME REQUIRED



CATEGORY	A	B	C	D
S-ILS 5	289-½ 200 (200-½)			
S-LOC 5	560-½	471 (500-½)	560-1	471 (500-1)
CIRCLING	560-1	467 (500-1)	560-1½ 467 (500-1½)	660-2 567 (600-2)
OGOYO FIX MINIMUMS (DME REQUIRED)				
S-LOC 5	460-½	371 (400-½)	460-5⁄8	371 (400-5⁄8)
CIRCLING	500-1 407 (500-1)	560-1 467 (500-1)	560-1½ 467 (500-1½)	660-2 567 (600-2)



ILS or LOC RWY 5

SE-2, 03 DEC 2020 to 31 DEC 2020

SE-2, 03 DEC 2020 to 31 DEC 2020