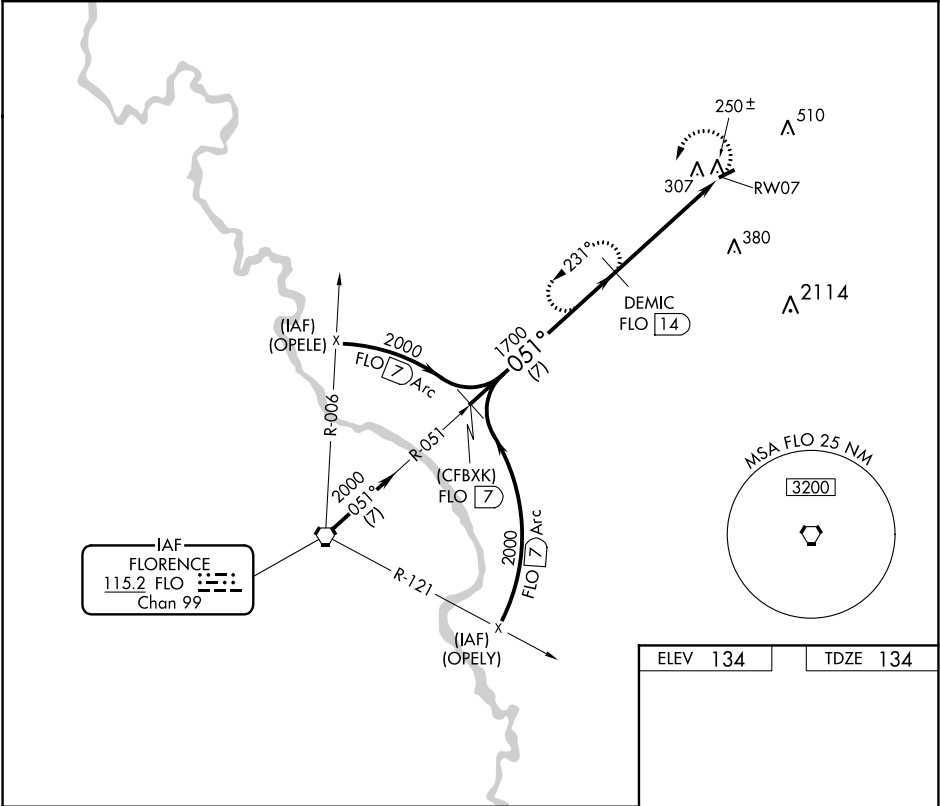


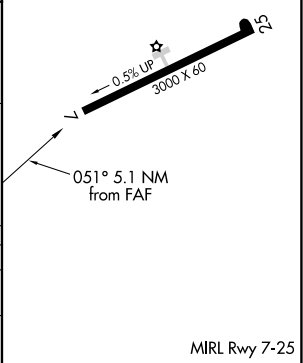
VORTAC FLO	APP CRS	Rwy Idg	3000
<u>115.2</u>	<u>051°</u>	TDZE	134
Chan 99		Apt Elev	134

VOR/DME or GPS RWY 7  
DILLON COUNTY (DLC)

<div><div></div><div>NA</div></div> <div>Use Florence altimeter setting.</div>	MISSED APPROACH: Climbing left turn to 2000 via FLO R-051 to DEMIC 14 DME and hold.
FLORENCE APP CON ★ 118.6 341.7	CTAF 122.9



Procedure Turn NA	(CFBXX) FLO 7		2000		DEMIC FLO 14	2000 FLO R-051	DEMIC FLO 14
	051°		1700				
	7 NM		5.1 NM				
RW07 FLO 19.1							
CATEGORY	A	B	C	D			
S-7	660-1	526 (600-1)	660-1½ 526 (600-1½)	NA			
CIRCLING	700-1	566 (600-1)	700-1½ 566 (600-1½)	NA			



SE-2, 03 DEC 2020 to 31 DEC 2020

SE-2, 03 DEC 2020 to 31 DEC 2020