

WAAS
CH **70637**
W01A

APP CRS
008°

Rwy Idg **4501**
TDZE **67**
Apt Elev **67**

RNAV (GPS) RWY 1

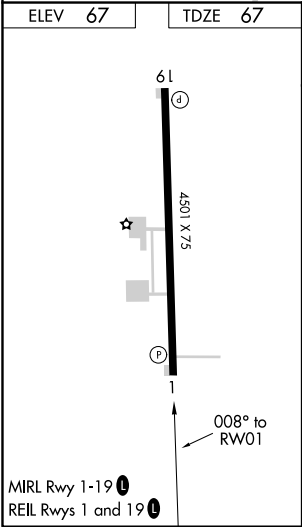
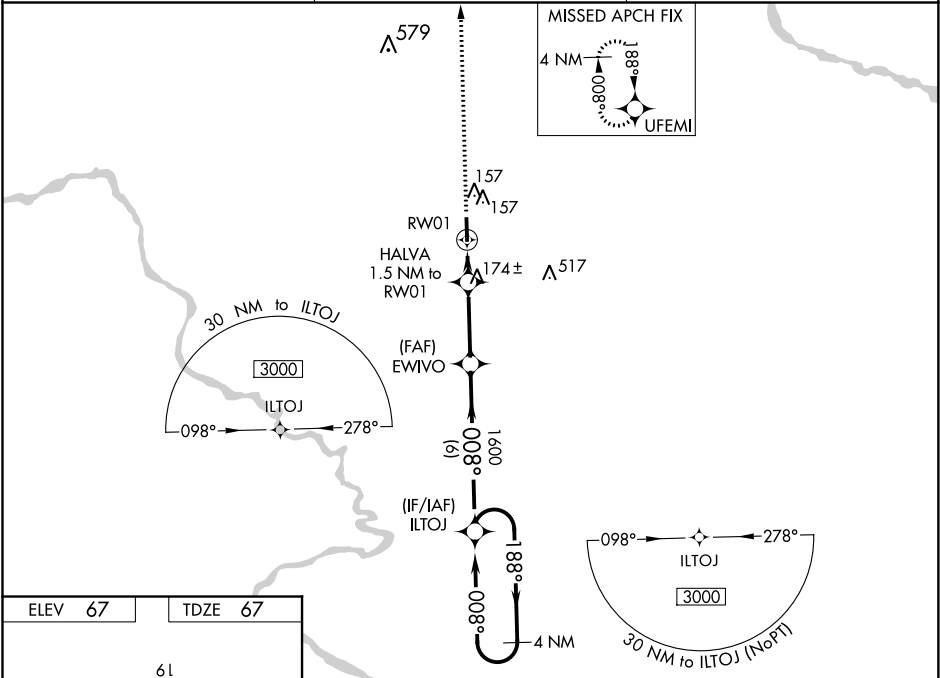
TRI-COUNTY AT HENRY JONER FIELD (A.SJ)

▽
⚠

DME/DME RNP-0.3 NA. Night Landing: Rwy 1 NA. When local altimeter setting not received, use Franklin altimeter setting and increase all DA 67 feet and all MDA 80 feet; increase LPV all Cats visibility ⅓ mile, LNAV Cats C/D visibility ⅓ mile and Circling Cat D visibility ¼ mile. Baro-VNAV NA when using Franklin altimeter setting. For uncompensated Baro-VNAV systems, LNAV/VNAV NA below -15°C (5°F) or above 54°C (130°F). Helicopter visibility reduction below 1 SM NA.

MISSED APPROACH:
Climb to 3000 direct
UFEMI and hold, continue
climb-in-hold to 3000.

AWOS-3 119.075	WASHINGTON CENTER 123.85 279.65	UNICOM 122.8 (CTAF) 📻
--------------------------	---	--



3000 ↑	UFEMI 				
*LNAV only.					
CATEGORY		A	B	C	D
LPV DA		359-1	292 (300-1)		NA
LNAV/VNAV DA		322-1	255 (300-1)		NA
LNAV MDA		440-1 373 (400-1)			
CIRCLING		580-1 513 (600-1)	580-1½ 513 (600-1½)	820-2½ 753 (800-2½)	