

WAAS CH 78310 W35A	APP CRS 343°	Rwy Idg 5000 TDZE 35 Apt Elev 37
--	------------------------	---

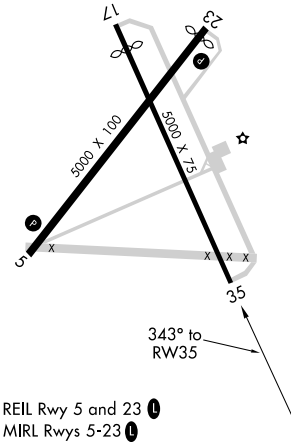
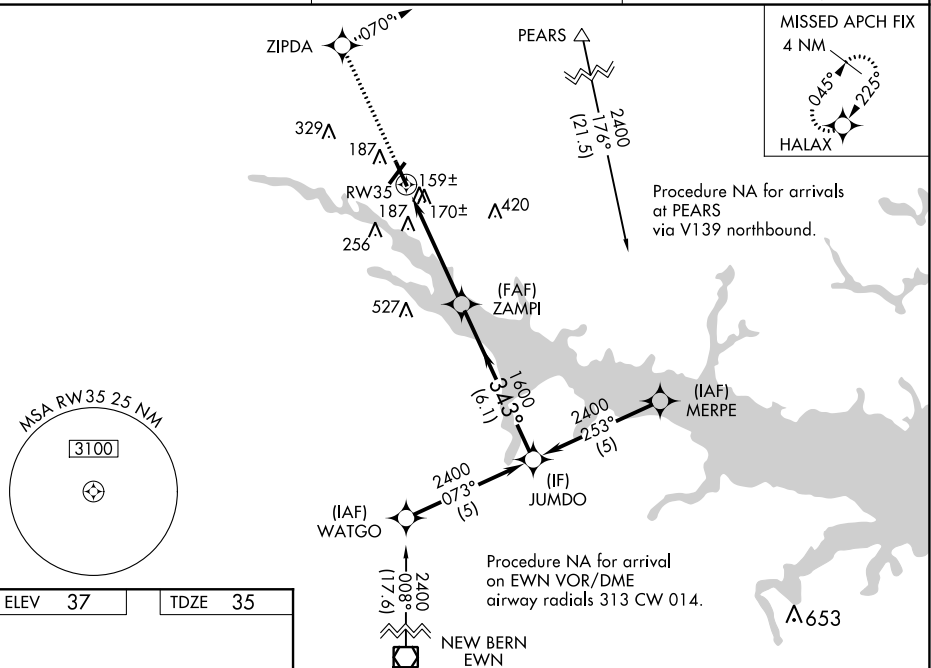
RNAV (GPS) RWY 35
WASHINGTON-WARREN(OCW)



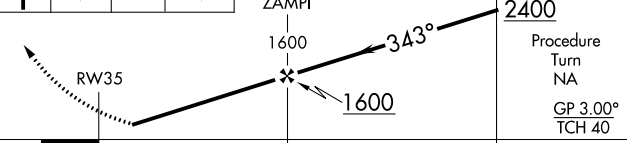
Baro-VNAV NA when using **Greenville** altimeter setting. For uncompensated Baro-VNAV systems, LNAV/VNAV NA below -15°C (5°F) or above 48°C (118°F). DME/DME RNP-0.3 NA. Helicopter visibility reduction below $\frac{3}{4}$ SM NA. When local altimeter setting not received, use Greenville altimeter setting and increase LPV DA to 400, LNAV/VNAV DA to 534, and all MDA 60 feet; increase LNAV Cats C and D visibility $\frac{1}{4}$ mile.

Night Landing: Rwy 17 NA.

MISSED APPROACH: Climb to 2600
direct ZIPDA and via 070° track to
HALAX and hold.

AWOS-3 120.175	CHERRY POINT APP CON 119.35 377.175	UNICOM 122.7 (CTAF) 0
--------------------------	---	---------------------------------



2600 ↑	ZIPDA 	070° tr	HALAX 		
CATEGORY		A	B	C	D
LPV DA		359-1¼ 324 (400-1¼)			
LNAV/ VNAV DA		493-1¾ 458 (500-1¾)			
LNAV MDA		500-1	465 (500-1)	500-1¼ 465 (500-1¼)	500-1½ 465 (500-1½)
CIRCLING		540-1	503 (600-1)	540-1½ 503 (600-1½)	620-2 583 (600-2)