

WAAS CH 42810 W05A	APP CRS 045°	Rwy Idg TDZE Apt Elev	5000 35 37
----------------------------------------	------------------------	-----------------------------	---------------------------------------

RNAV (GPS) RWY 5

WASHINGTON-WARREN (OCW)

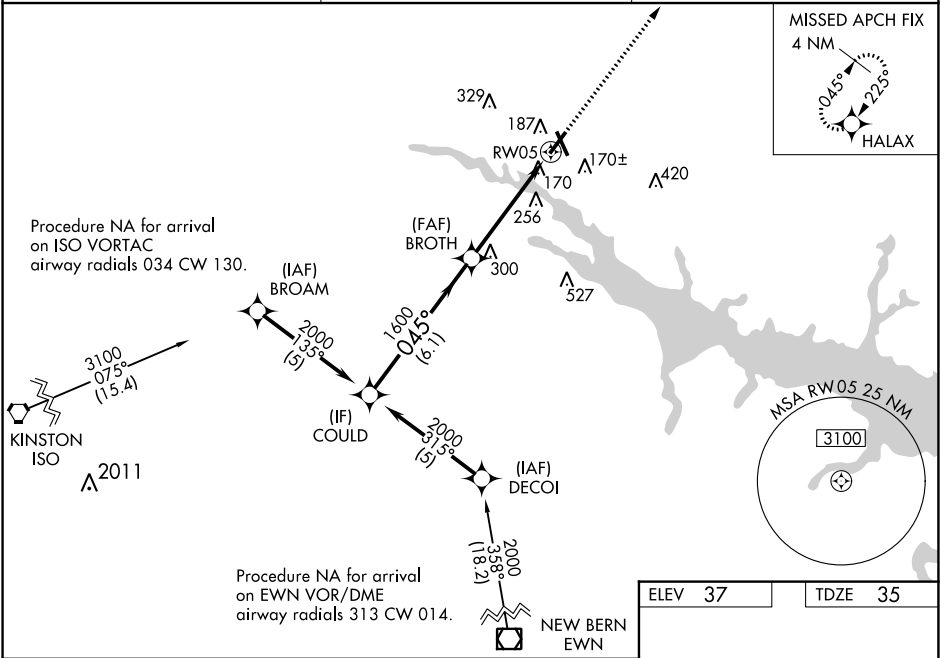
▼

▲

Night Landing: Rwy 17 NA. Baro-VNAV NA when using Greenville altimeter setting.
For uncompensated Baro-VNAV systems, LNAV/VNAV NA below -15°C (5°F) or above 48°C (118°F). DME/DME RNP-0.3 NA. Helicopter visibility reduction below ¾ SM NA. When local altimeter setting not received, use Greenville altimeter setting and increase LPV DA to 483, LNAV/VNAV DA to 518, and all MDA 60 feet; increase LNAV/VNAV all Cats. visibility ¼ mile.

MISSED APPROACH:
Climb to 2600 direct
HALAX and hold.

AWOS-3 120.175	CHERRY POINT APP CON 119.35 377.175	UNICOM 122.7 (CTAF) 0
--------------------------	-----------------------------------------------	---------------------------------



COULD

2000

045°

BROTH

1600

1600

2600

HALAX

Procedure Turn NA

GP 3.00°

TCH 40

6.1 NM

4.7 NM

CATEGORY	A	B	C	D
LPV DA	442-1½ 407 (500-1½)			
LNAV/VNAV DA	477-1½ 442 (500-1½)			
LNAV MDA	560-1 525 (600-1)	560-1½ 525 (600-1½)	560-1¾ 525 (600-1¾)	
CIRCLING	560-1 523 (600-1)	560-1½ 523 (600-1½)	620-2 583 (600-2)	

