

WAAS
CH 65836
W07A

APP CRS
074°

Rwy Idg
TDZE
Apt Elev

4001
1067
1067

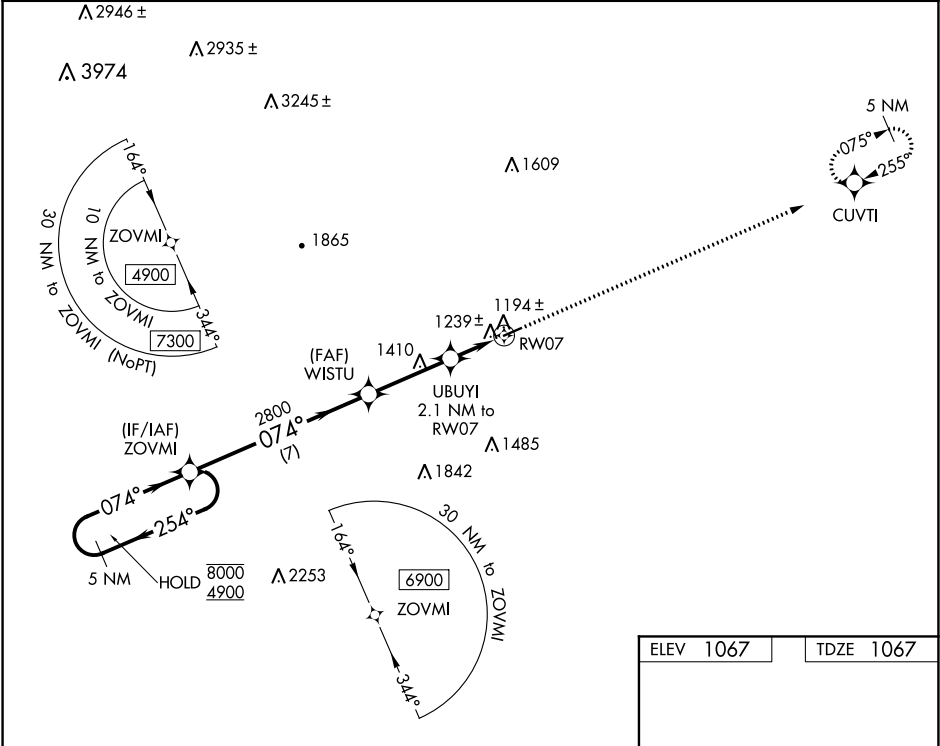
RNP APCH.

NA

Procedure NA at night. Obtain local altimeter setting on CTAF; when not received, use Mount Airy altimeter setting and increase all MDAs 80 feet and all Cats C/D visibilities ¼ SM. Rwy 7 helicopter visibility reduction below 1 SM NA.

MISSED APPROACH: Climb to 5100 direct CUVTI and hold, continue climb-in-hold to 5100.

ATLANTA CENTER 125.15 263.0	UNICOM 123.05 (CTAF)
--------------------------------	-------------------------



5 NM Holding Pattern		Visual Segment - Obstacles.		5100	CUVTI
8000 ← 254°		ZOVMI		↑	✱
4900 → 074°		WISTU		UBUYI 2.1 NM to RW07	
		2800		RW07	
		1780		0.8% UP	
		7 NM		4001 X 75	
		3.2 NM		074° to RW07	
		2.1 NM			
CATEGORY	A	B	C	D	
LP MDA	1460-1	393 (400-1)	1460-1½	393 (400-1½)	
LNAV MDA	1500-1	433 (500-1)	1500-1¼	433 (500-1¼)	
CIRCLING	1540-1 473 (500-1)	1600-1 533 (600-1)	1680-1¾ 613 (700-1¾)	1840-2½ 773 (800-2½)	