

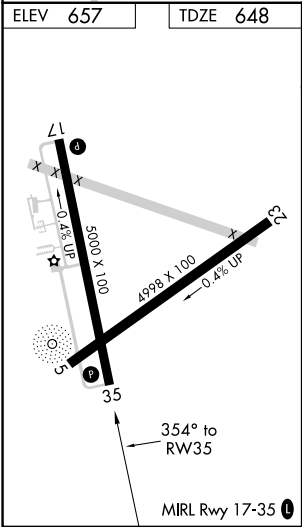
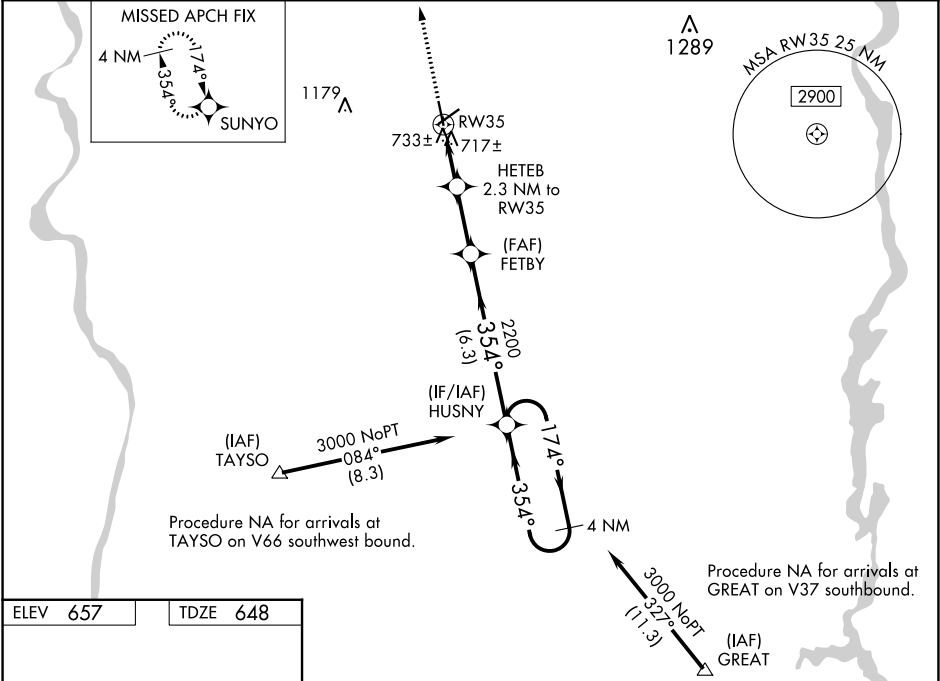
WAAS CH <b>40318</b> <b>W35A</b>	APP CRS <b>354°</b>	Rwy Idg TDZE <b>648</b> Apt Elev <b>657</b>
--	------------------------	---




RNAV (GPS) RWY 35  
CHESTER CATAWBA RGNL (DCM)

**⚠** Circling to Rwy 5-23 NA at night. For uncompensated Baro-VNAV systems, LNAV/VNAV NA below -16°C (4°F) or above 47°C (116°F). DME/DME RNP-0.3 NA. Visibility reduction by helicopters NA. When local altimeter setting not received, use Rock Hill altimeter setting and increase all DA 33 feet and all MDAs 40 feet; increase LPV, LNAV/VNAV all Cats and LNAV Cat C visibility ¼ mile. Baro-VNAV and VDP NA when using Rock Hill altimeter setting.

**MISSED APPROACH:**  
Climb to 3000 direct SUNYO and hold.

AWOS-3 <b>120.975</b>	CHARLOTTE APP CON <b>120.05 307.8</b>	UNICOM <b>122.7 (CTAF) 0</b>
--------------------------	--	---------------------------------



3000 ↑		SUNYO 		VGSI and RNAV glidepath not coincident (VGSI Angle 3.00/TCH 32).		HUSNY 4 NM Holding Pattern			
*LNAV only.		HETEB 2.3 NM to RW35		FETBY 2200		← 354° 174° → 3000			
		*1.1 NM to RW35 ↓		*1420 ✕		GP 3.00° TCH 55			
		1.1 NM 1.2 NM		2.4 NM		6.3 NM			
CATEGORY		A		B		C		D	
LPV DA		940-1 292 (300-1)							
LNAV/VNAV DA		1010-1¼ 362 (400-1¼)							
LNAV MDA		1020-1 372 (400-1)						1020-1¼ 372 (400-1¼)	
CIRCLING		1160-1 503 (600-1)				1160-1½ 503 (600-1½)		1220-2 563 (600-2)	

SE-2, 03 DEC 2020 to 31 DEC 2020

SE-2, 03 DEC 2020 to 31 DEC 2020