

WAAS CH <b>97605</b> <b>W07A</b>	APP CRS <b>073°</b>	Rwy Idg TDZE <b>891</b> Apt Elev <b>891</b>	<b>5000</b>
----------------------------------------	------------------------	---------------------------------------------------	-------------

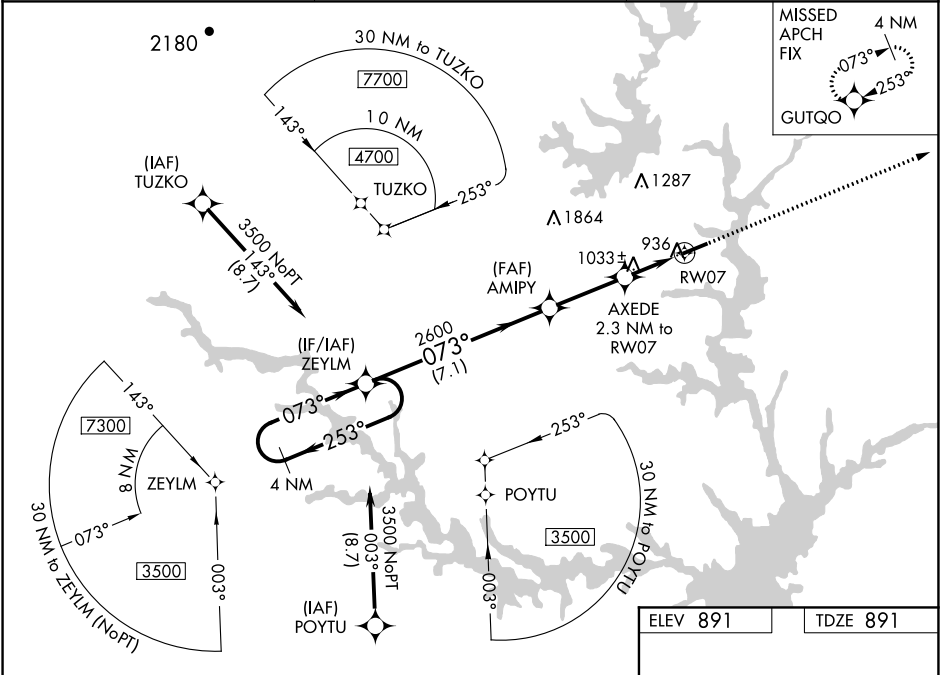
**RNAV (GPS) RWY 7**  
OCONEE COUNTY RGNL (CEU)

**⚠** Baro-VNAV NA when using Anderson altimeter setting. For uncompensated Baro-VNAV systems, LNAV/VNAV NA below -6°C (22°F) or above 54°C (130°F). DME/DME RNP-0.3 NA.

**⚠** When local altimeter setting not received, use Anderson altimeter setting and increase all DA 47 feet and all MDA 60 feet; increase LPV and LNAV/VNAV Cats A and B, and LNAV Cat C visibility ¼ mile. Helicopter visibility reduction below ¾ SM NA.

**MISSED APPROACH:**  
Climb to 3000 direct GUTQO and hold.

ASOS <b>119.275</b>	GREER APP CON ★ <b>118.8 270.275</b>	UNICOM <b>122.7 (CTAF) 0</b>
------------------------	-----------------------------------------	---------------------------------



**4 NM Holding Pattern**

**GP 3.00° TCH 53**

**VGSI and RNAV glidepath not coincident (VGSI Angle 3.00/TCH 39).**

**3000 GUTQO**

**\*LNAV only.**

**\*1.2 NM to RW07**

**\*1.660**

**7.1 NM**

**2.9 NM**

**1.1**

**1.2**

CATEGORY	A	B	C	D
LPV DA	1146-¾	255 (300-¾)	1146-1	NA
LNAV/VNAV DA	1144-¾	253 (300-¾)	1144-1	NA
LNAV MDA	1300-1	409 (500-1)	1300-1½	NA
CIRCLING	1300-1	1360-1	1640-2½	NA
	409 (500-1)	469 (500-1)	749 (800-2¼)	

**MIRL Rwy 7-25 0**

**REIL Rwy 7 and 25 0**