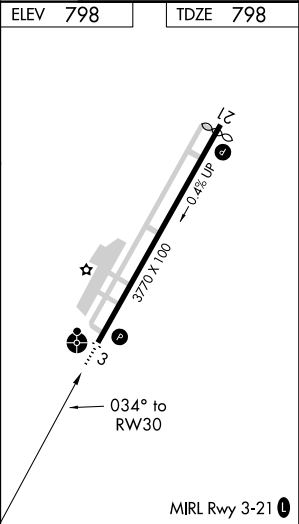
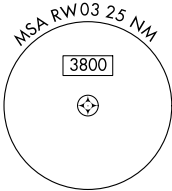
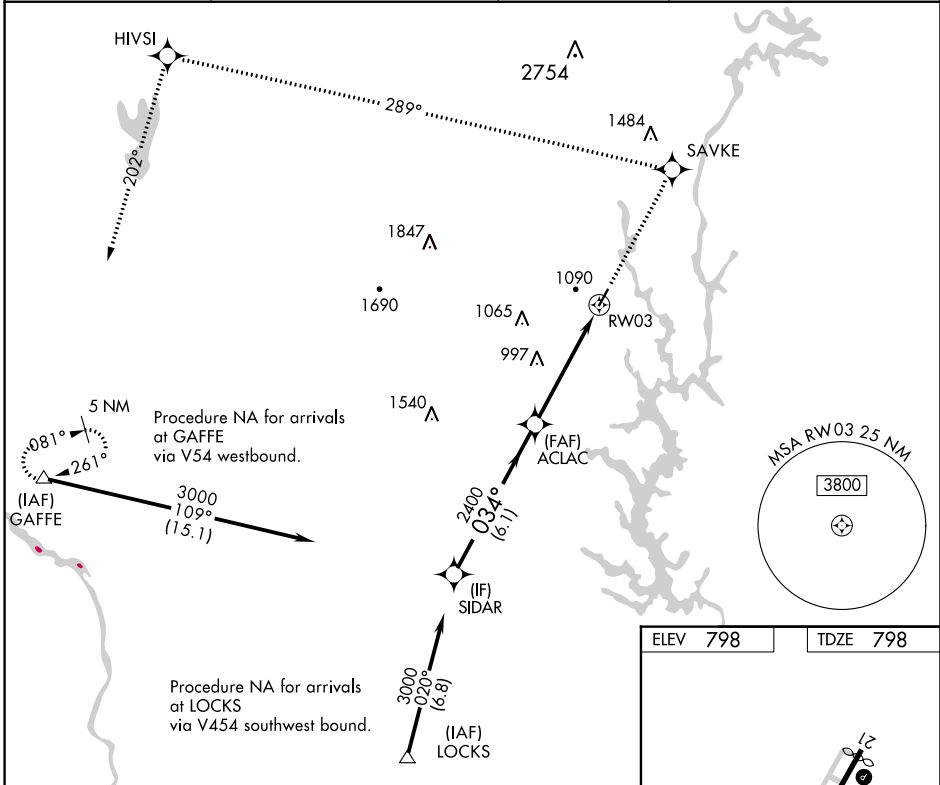


WAAS CH <b>90302</b> <b>W03A</b>	APP CRS <b>034°</b>	Rwy Idg TDZE Apt Elev	<b>3770</b> <b>798</b> <b>798</b>
--	------------------------	-----------------------------	---

RNAV (GPS) RWY 3  
GASTONIA MUNI (AKH)

RNP APCH. ▼ If local altimeter setting not received, use Charlotte Douglas Intl altimeter setting and increase all DAs/MDAs 40 feet. Inoperative table does not apply.	ODALS ● ⋮	MISSED APPROACH: Climb to 3200 direct SAVKE and via 289° track to HIVSI and 202° track to GAFFE and hold.
---	--------------	---

ASOS <b>135.725</b>	CHARLOTTE APP CON <b>120.05 257.2</b>	CLNC DEL <b>127.2</b>	UNICOM <b>123.0 (CTAF)</b> 0
------------------------	--	--------------------------	---------------------------------



VGSI and RNAV glidepath not coincident (VGSI Angle 3.00/TCH 26).				3200 SAVKE	HIVSI	GAFFE
SIDAR				tr 289°	tr 202°	△
Procedure Turn NA				3000	034°	2400
GP 3.00° TCH 40				6.1 NM	4.8 NM	
CATEGORY	A	B	C	D		
LPV DA	1118-1¼	320 (400-1¼)		NA		
LNAV MDA	1440-1	642 (700-1)	1440-1¾ 642 (700-1¾)	NA		

SE-2, 03 DEC 2020 to 31 DEC 2020

SE-2, 03 DEC 2020 to 31 DEC 2020