

APP CRS
224°

Rwy Idg
4001

TDZE
570

Apt Elev
570

RNAV (GPS) RWY 22

NEWBERRY COUNTY (EOE)

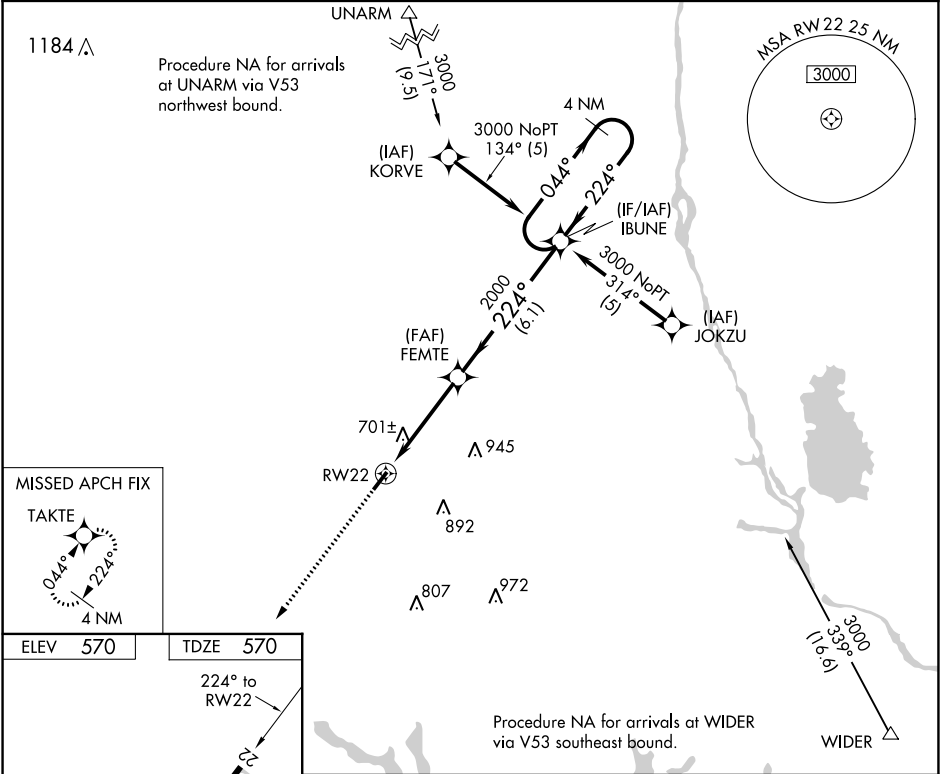
▼

▲

DME/DME RNP-0.3 NA. When local altimeter setting not received, use Greenwood County altimeter setting and increase all MDA 80 feet. VDP NA when using Greenwood County altimeter setting. Helicopter visibility reduction below ¾ SM NA.

MISSED APPROACH: Climb to 3000 direct TAKTE and hold.

AWOS-3 124.275	COLUMBIA APP CON 133.4 285.6	UNICOM 122.8 (CTAF) 0
--------------------------	--	---------------------------------



ELEV 570

TDZE 570

224° to RW22

4001 X 75

0.9% UP

MIRL Rwy 4-22

3000

TAKTE

4 NM Holding Pattern

IBUNE

FEMTE

1.1 NM to RW22

224°

044°

3000

2000

3.03° TCH 45

1.1

3.2 NM

6.1 NM

CATEGORY	A	B	C	D
LNAV MDA	960-1	390 (400-1)	NA	
CIRCLING	1080-1 510 (600-1)	1100-1 530 (600-1)	NA	

SE-2, 03 DEC 2020 to 31 DEC 2020

SE-2, 03 DEC 2020 to 31 DEC 2020