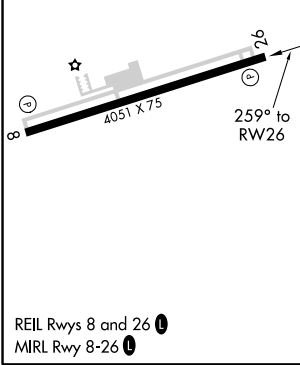
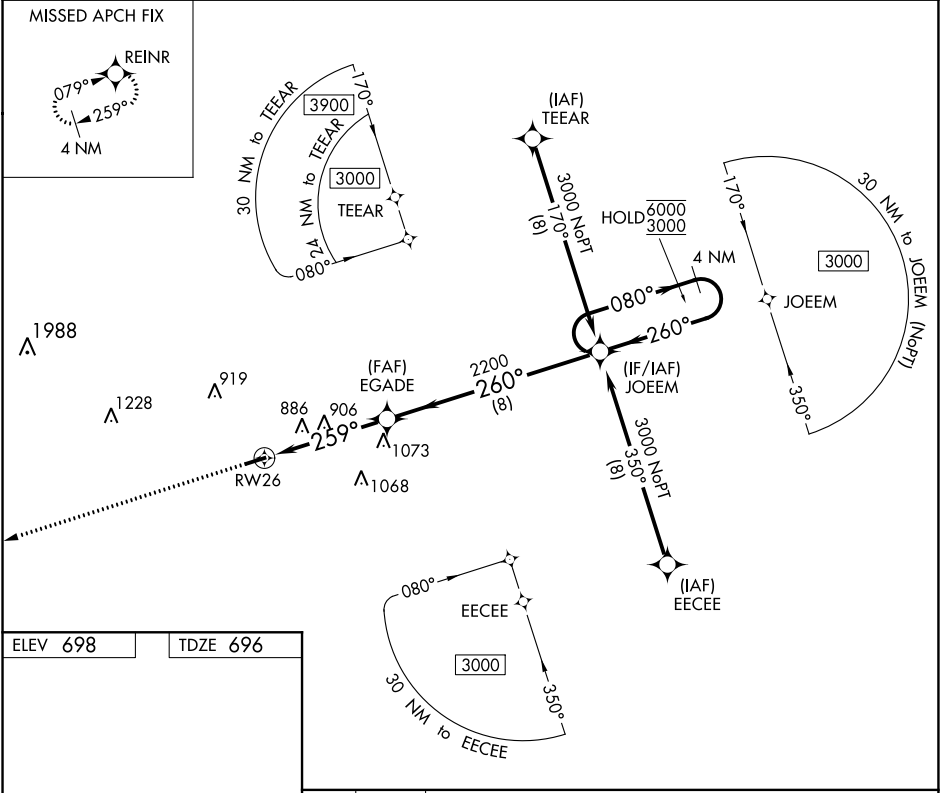


WAAS CH 81935 W26A	APP CRS 259°	Rwy Idg TDZE Apt Elev	4051 696 698
--	------------------------	-----------------------------	---

RNAV (GPS) RWY 26

LAURENS COUNTY (LUX)

RNP APCH:		MISSED APPROACH: Climb to 3000 direct REINR and hold.
AWOS-3 123.975	GREER APP CON ★ 120.6 350.2	UNICOM 122.8 (CTAF) 0



3000 REINR		4 NM Holding Pattern	
↑		JOEEM	
1.3 NM to RW26		EGADE	
RW26		2200	
1.3		3.3 NM	
8 NM		260°	
CATEGORY		A	
LP MDA		1160-1 464 (500-1)	
LNAV MDA		1160-1 464 (500-1)	
CIRCLING		1200-1 502 (600-1)	