

WAAS CH <b>63210</b> <b>W05A</b>	APP CRS <b>050°</b>	Rwy Idg <b>4351</b> TDZE <b>73</b> Apt Elev <b>73</b>
--	------------------------	---

RNAV (GPS) RWY 5

BERKELEY COUNTY (MKS)

▼

▲

NA

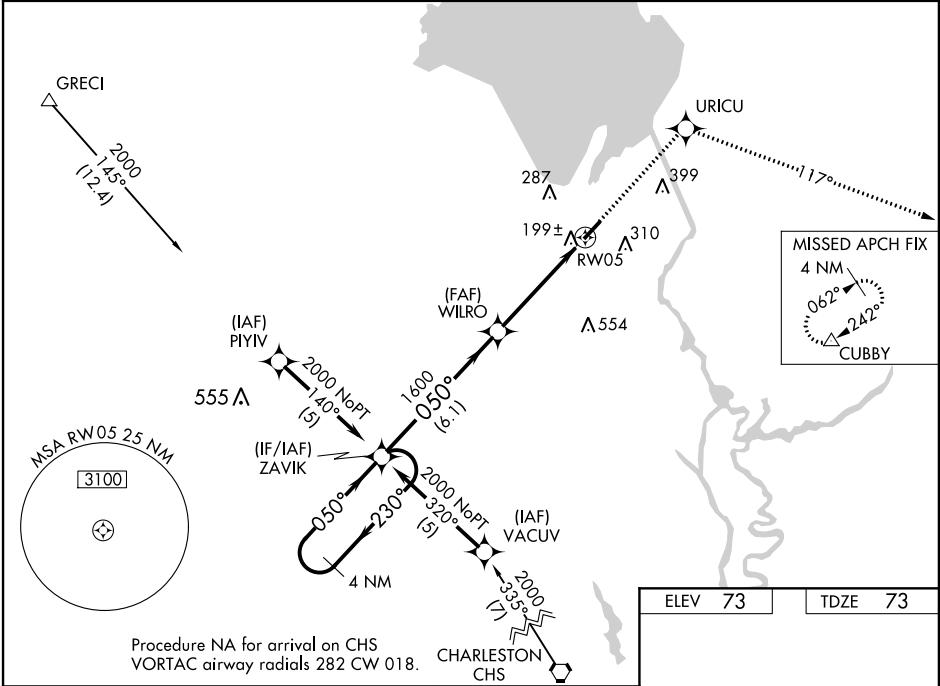
Circling to Rwy 23 NA at night. Baro-VNAV NA when using Charleston AFB/Intl altimeter setting. For uncompensated Baro-VNAV systems, LNAV/VNAV NA below -15° C (5° F) or above 48° C (118° F). DME/DME RNP-0.3 NA. Visibility reduction by helicopters NA. When local altimeter setting not received, use Charleston AFB/Intl altimeter setting and increase LPV DA to 451 feet; LNAV/VNAV DA to 513 feet, and all MDA 60 feet; increase LNAV and Circling Cat. C visibility ¼ mile. VDP NA when using Charleston AFB/Intl altimeter setting.

MISSED APPROACH: Climb to 2000 direct URICU and via 117° track to CUBBY and hold.

AWOS-3  
**119.175**

CHARLESTON APP CON  
**119.3 379.925**

UNICOM  
**123.05 (CTAF) 0**



4 NM Holding Pattern		ZAVIK	2000	URICU	2000	CUBBY
				117° TRK		
				*1.3 NM to RW05	*LNAV only	
					RW05	
					050° to RW05	
CATEGORY	A	B	C	D		
LPV DA	407-1¼		334 (400-1¼)			
LNAV/VNAV DA	469-1½		396 (400-1½)			
LNAV MDA	520-1	447 (500-1)	520-1¼	520-1½		
	447 (500-1)	547 (600-1)	447 (500-1¼)	447 (500-1½)		
CIRCLING	520-1	620-1	620-1½	640-2		
	447 (500-1)	547 (600-1)	547 (600-1½)	567 (600-2)		

