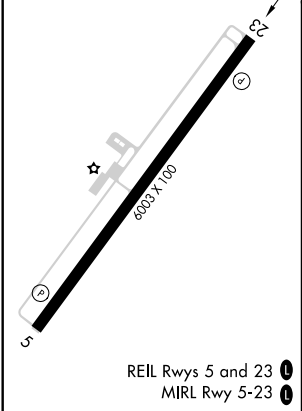
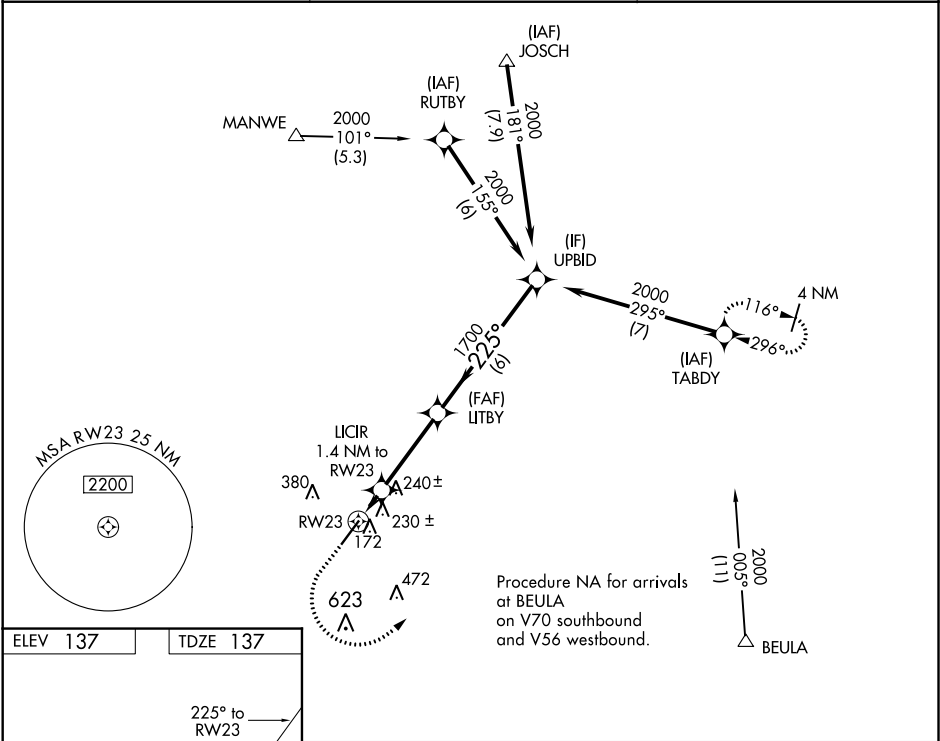


WAAS CH 69521 W23A	APP CRS 225°	Rwy Idg TDZE Apt Elev 137	6003 137 137
--	------------------------	--	---

RNAV (GPS) RWY 23

DUPLIN COUNTY (DPL)

RNP APCH. ▼ ▲ For uncompensated Baro-VNAV systems, LNAV/VNAV NA below -15°C or above 54°C.		MISSED APPROACH: Climb to 1000 then climbing left turn to 2000 direct TABDY and hold.
AWOS-3 120.675	SEYMOUR JOHNSON APP CON★ 119.7 273.6	UNICOM 123.0 (CTAF) 0



1000	2000	TABDY				
*LNAV only.						
RW23						
LICIR 1.4 NM to RW23						
*620						
1700						
2000						
UPBID						
225°						
GP 3.00° TCH 43						
CATEGORY	A	B	C	D		
LPV DA	337-¾ 200 (200-¾)					
LNAV/ VNAV DA	407-⅞ 270 (300-⅞)					
LNAV MDA	480-1 343 (400-1)					