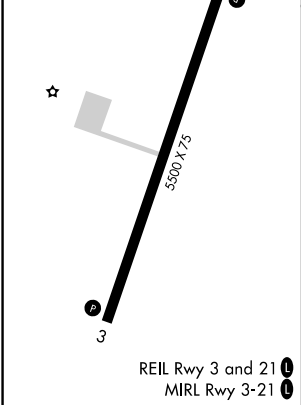
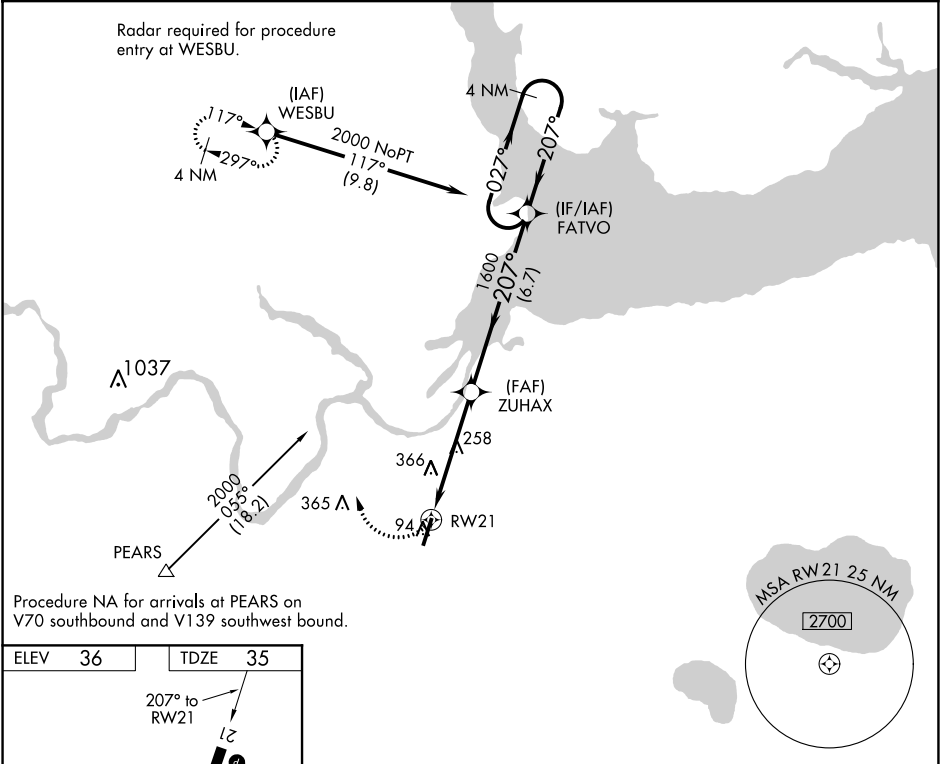


WAAS CH <b>63125</b> <b>W21A</b>	APP CRS <b>207°</b>	Rwy Idg TDZE <b>35</b> Apt Elev <b>36</b>
--	------------------------	---

RNAV (GPS) RWY 21  
PLYMOUTH MUNI (PMZ)

<p><b>⚠</b> NA Use Northeastern Rgnl altimeter setting; when not received, use Coastal Carolina Rgnl altimeter setting and increase all MDA 80 feet and increase Cat C visibility ¼ mile. When VGSi inop, procedure NA at night. DME/DME RNP-0.3 NA.</p>	<p>MISSED APPROACH: Climbing right turn to 2000 direct WESBU and hold.</p>
--	--

CHERRY POINT APP CON <b>119.35 377.175</b>	UNICOM <b>122.8 (CTAF) 0</b>
---	---------------------------------



2000	WESBU	VGSi and descent angles not coincident (VGSi Angle 4.00/TCH 28).	4 NM	Holding Pattern
CATEGORY	A	B	C	D
LP MDA	600-1	565 (600-1)	600-1½ 565 (600-1½)	NA
LNAV MDA	660-1	625 (700-1)	660-1¾ 625 (700-1¾)	NA
CIRCLING	660-1	624 (700-1)	720-2 684 (700-2)	NA