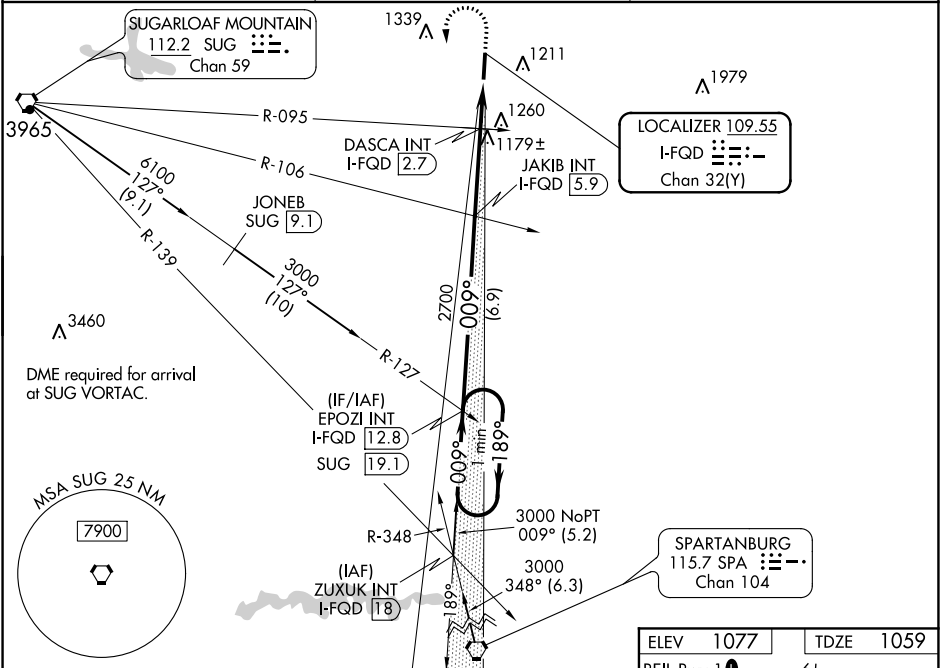


LOC/DME I-FQD <b>109.55</b> Chan <b>32(Y)</b>	APP CRS <b>009°</b>	Rwy Idg TDZE <b>1059</b> Apt Elev <b>1077</b>	LOC RWY 1 RUTHERFORD COUNTY-MARCHMAN FIELD (FQD)
---	------------------------	---	---

**VDP NA** with Shelby-Cleveland County Rgnl altimeter setting. When local altimeter setting not received, use Shelby-Cleveland County Rgnl altimeter setting and increase all MDA 80 feet and S-1 Cat C and D and Circling Cat C visibilities  $\frac{1}{8}$  mile; increase Circling Cat D visibility  $\frac{1}{4}$  mile. DASCAs fix minimums: Increase S-1 Cat C and D and Circling Cat C and D visibilities  $\frac{1}{4}$  mile.

**MISSED APPROACH:** Climb to 1800 then climbing left turn to 3000 on heading 165° and on I-FQD localizer south course to EPOZI INT/I-FQD 12.8 DME and hold.

AWOS-3 <b>118.275</b>	GREER APP CON ★ <b>119.4 350.2</b>	UNICOM <b>122.8 (CTAF) 0</b>
--------------------------	---------------------------------------	---------------------------------



One Minute Holding Pattern		EPOZI INT I-FQD 12.8		1800		3000		hdg 165° I-FQD		EPOZI INT		REIL Rwy 1 0		MIRL Rwy 1-19 0		61			
3000		←189°		009°→		009°		JAKIB INT I-FQD 5.9		DASCA INT I-FQD 2.7		I-FQD 0.9		3.00° TCH 40		2700		*1600	
*1680 when using Shelby-Cleveland County Rgnl altimeter setting.		6.9 NM		3.2 NM		0.7 NM		1.1											
		A		B		C		D											
CATEGORY		A		B		C		D											
S-1		1600-1		541 (600-1)		1600-1½		541 (600-1½)											
CIRCLING		1600-1		1620-1		1640-1½		1820-2½											
		523 (600-1)		543 (600-1)		563 (600-1½)		743 (800-2½)											
DASCA FIX MINIMUMS (DUAL VOR RECEIVERS OR DME REQUIRED)		S-1		1440-1		381 (400-1)		1440-1½		381 (400-1½)									
		CIRCLING		1560-1		1620-1		1640-1½		1820-1½									
		483 (500-1)		543 (600-1)		563 (600-1½)		743 (800-1½)											
		ELEV 1077		TDZE 1059		REIL Rwy 1 0		MIRL Rwy 1-19 0											